

**ELECTRICAL AND MECHANICAL  
ENGINEERING SERVICES**



**SMITH ENGINEERING  
CONSULTANTS, INC.**

Re: Electrical & Mechanical Engineering Services

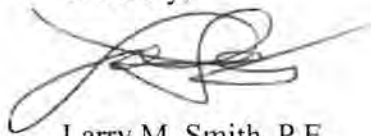
Dear Client:

Thank you for the opportunity to introduce Smith Engineering Consultants, Inc. (SEC) to you today. We are a south Florida engineering firm located in West Palm Beach. Our staff is highly experienced in the planning, design, and construction supervision of all types of electrical and mechanical installations. Our registered engineers and designers have extensive experience in completing numerous projects of all types including; water and wastewater treatment facilities, roadway, airport, and sportsfield lighting, and various types of industrial complexes.

At SEC our key staff including myself (Larry Smith, P.E.), Mario Fernandez, P.E., Steve Hockman, and Jim DeBay, P.E. each have over 20 to 30 years of experience in providing electrical and mechanical engineering services throughout south Florida. Our in-house mechanical engineers, Jim DeBay, P.E. and David Jones, P.E. support our electrical engineering projects in several ways. These include the air conditioning of electrical rooms and equipment; and the design of fuel storage tanks, piping, and ventilation in support of our numerous generator installations.

I, Larry M. Smith, P.E., SEC President, will be the point of contact for your projects. I am based in our West Palm Beach office located at 2161 Palm Beach Lakes Blvd., Suite 312, West Palm Beach, FL 33409. My telephone number is (561) 616-3911 x202. We have been in West Palm Beach for over 13 years and commit to perform all work on time and within budget as we have on all prior projects. We would welcome the opportunity to work with you on your projects, and I feel confident that we would exceed your expectations. Please call me at your convenience for any additional information.

Sincerely,



Larry M. Smith, P.E.  
President

# TABLE OF CONTENTS

## SECTION

1. **Firm Expertise & Experience**
2. **GSA Form 330**
3. **References**
4. **Business Licenses**
5. **Public Agency Certifications**
6. **Small Business Certifications**
7. **Insurance Certificates**
8. **Miscellaneous Project Photos**



## Introduction

Smith Engineering Consultants, Inc. is a multi-discipline engineering firm with an in-depth knowledge of energy, water, telecommunications, and architectural projects. At SEC, we approach our business just as you do, focusing on our customers and the various environments in which they operate.

SEC places a strong emphasis on creating productive working relationships with clients. Because we believe that teamwork is the key to success, our professionals are committed to responsive service, attention to detail, and effective communication and cooperation.

Our staff has built a deserved reputation for completing assignments in a cost-effective and timely manner. We've accomplished this through innovative thinking, careful planning, and professionals who believe in quality and hard work.

We invite your review of our qualifications and experience describing the engineering services offered by SEC. This summary provides an overview of our capabilities, and presents profiles of key personnel and past assignments.

## Providing Services for

- ◆ *Electric Utilities*
- ◆ *Water, Wastewater, Solid Waste*
- ◆ *Industrial Facilities*
- ◆ *Institutions/Commercial Facilities*
- ◆ *Architecture*
- ◆ *Transportation*
- ◆ *Parks and Recreation*

## Areas of Expertise

- ◆ *Transmission and distribution systems*
- ◆ *Electrical systems*
- ◆ *HVAC/Plumbing/Piping*
- ◆ *Energy conservation and power quality studies*
- ◆ *Power generation/cogeneration*
- ◆ *Controls and instrumentation*
- ◆ *Indoor/Outdoor lighting*
- ◆ *Telecommunications*





## Water, Wastewater, and Solid Waste Facilities

### Electrical, HVAC, and Plumbing Design Expertise

As Florida continues to experience tremendous growth, water, wastewater, and solid waste facilities will remain in the forefront of infrastructure and capital improvement efforts. The staff at Smith Engineering Consultants has played an important role in the design, construction, and renovation of facilities throughout the nation. Our knowledge of facilities and agencies in Martin, Palm Beach, and Broward Counties is particularly notable, due to our more than 20 years of experience here in south Florida.

Water, wastewater, and solid waste facilities require complex electrical systems, including power, lighting, controls, instrumentation, and telemetry. Whether you represent a municipal or county agency, or are a consultant designing new plants or upgrades, you can turn to SEC for expertise in the design of these elements.

### “Total Project” Approach

Cost-effective design is the key to success for today’s county and municipal infrastructure projects. Understanding that funding usually comes from a county or city’s own tax base, our staff approach every design from a “Total Project” perspective. In addition to meeting environmental usage standards, we will provide the most cost-effective and efficient design for the long term, always looking hard at the client’s operation and maintenance costs.

### Service Areas Provided

- ◆ *Preliminary design reports*
- ◆ *Final plans and specifications*
- ◆ *Power distribution, on-site generation and cogeneration*
- ◆ *Indoor/outdoor lighting*
- ◆ *Controls and instrumentation*
- ◆ *Heating, ventilation, and air conditioning systems*
- ◆ *Plumbing and piping systems*
- ◆ *Construction administration and observation*
- ◆ *Start-up and testing assistance*

### Projects Completed by Staff

- ◆ *Broward County O.E.S. Wastewater Transmission System Expansion*
- ◆ *Miramar Wastewater Reclamation Facility*
- ◆ *Florida Keys Aquaduct Authority R.O. Plant Rehabilitation*
- ◆ *South Florida Water Management District STA-1W Water Control Structures*
- ◆ *Royal Palm Beach 3MG Storage Tank and High Service Pumps*
- ◆ *City of Sunrise Lift Stations*
- ◆ *Lake Worth Water Treatment Plant Filters*
- ◆ *Palm Beach County SWA Landfill Expansion*

## Water

- ◆ ABACOA Canal Gate Structures for Northern Palm Beach County Improvement District (Motor Gates and Telemetry)
- ◆ Hobe Sound Water Treatment Plant Improvements (Flow Control Valve)
- ◆ City of Riviera Beach Water Treatment Plant Filters (Filter Controls)
- ◆ City of Lake Worth Water Treatment Plant Filters (Filter Controls)
- ◆ City of Deerfield Beach Water Treatment Plant Wells (R.O. Wells)
- ◆ Village of Royal Palm Beach Water Treatment Plant Controls (H.S. Pump Control Panel)
- ◆ Village of Royal Palm Beach 3.0 MG Storage and H.S. Pumps (New Pump Station)
- ◆ ABACOA Surficial Aquifer Wells (Seven New R.O. Wells for Jupiter Water Treatment Plant)
- ◆ Hood Road Repump Station VFD Replacement (Two 100 hp Pumps)
- ◆ Moffet Street Stormwater Pump Station (New Pump Station)
- ◆ Oakton Lakes Stormwater Pump Station (New Pump Station)
- ◆ Breaker's Hotel Stormwater Pump Station (New Pump Station)
- ◆ South Florida Water Management District STA - 1W Water Control Structures (New Electric Buildings)
- ◆ FKA Stock Island R.O. Plant Rehabilitation (Three New Generators, New Switch Gear)
- ◆ Polonio Pass Water Treatment Plant Construction (Construction Administration)
- ◆ ACME Improvement District Stormwater Pump Stations Preliminary Study (Preliminary Design Report)
- ◆ Jupiter Water Treatment Plant R.O. Booster Pumps (New VFD's)
- ◆ Northern Palm Beach County Improvement District Canal Structures Electrical Design (Gate Control/Telemetry)
- ◆ IBIS Intermediate Pump Station (New 100 hp Pump)
- ◆ Ft. Pierce Utilities Water Treatment Plant MCC Replacement (Design/Build Electrical Contract)
- ◆ St. Lucie County Service Garage Remediation (Groundwater Remediation System)
- ◆ Palm Beach County VFD Replacement for High Service Pumps 5 and 6 (Two New 100 hp VFD's at Water Treatment Plant #3)
- ◆ Okeechobee Field Station - Construction Services (Admin. Maint. Complex)
- ◆ F.K.A.A. Seawater R.O. Plant Modifications (Preliminary Study)
- ◆ City of Riviera Beach Water Treatment Plant Modifications (New Plant Computer)
- ◆ Santa Ynez Pumping Plant (CCWA) (5-300 hp Pumps)
- ◆ Jupiter Water Treatment Plant R.O. Well No. 4 VFD Installation (125 hp VFD)
- ◆ Tamarac Water Treatment Plant UPS Installation (Main Plant C)
- ◆ NPBCWCD Stormwater Lift Stations (Ibis Development) (Generator and Pump Controls Startup)
- ◆ Semi-Tropic WSD Pumpback Pipeline (Aqueduct Turnout)
- ◆ Arvin-Edison WSD Forrest Frick Pumping Plant Expansion (Two New 5kV Motors, 500 and 1000 hp)
- ◆ Jupiter Water Treatment Plant Lime Sludge Handling Facility (New Electric Building)
- ◆ Bahamas Water Distribution Network S.C.A.D.A. System (Island Telemetry)
- ◆ Northern Palm Beach County Improvement District Baywinds (Stormwater Pump Stations)
- ◆ Village of Wellington 12<sup>th</sup> Fairway (Stormwater Pump Station)
- ◆ City of Lake Worth Utilities Water Treatment Plant (Main Electrical Equipment Evaluation)
- ◆ Ft. Pierce Utilities Water Treatment Plant R.O. Wells, (Two new wells)
- ◆ Lake Worth Utilities R.O. Wells (Two new wells)
- ◆ Northern Palm Beach County Improvement District Unit 5E (Stormwater Pump Station)
- ◆ ABACOA Lake Liner Protection Wells (Fifteen Wells w/Telemetry)
- ◆ Northern Palm Beach County Improvement District EPB-6/C-17 Canal (Dual Telemetry Systems)
- ◆ City of Weston Phase III (Stormwater Pump Station)
- ◆ ABACOA Stormwater Pump Station (Wetwell Type Pump Station)
- ◆ Indian River County R.O. Wells (Generator for three (3) wells)
- ◆ BJ's Irrigation Pump Station (Small Irrigation Pump)
- ◆ City of Lake Worth Utilities Wells Telemetry (SCADA for Nine (9) Existing Wells & Elevated Tank)
- ◆ City of Lake Worth Utilities Water Treatment Plant Study (Main Electrical Switchgear Evaluation)
- ◆ City of West Palm Beach Renaissance Project (Stormwater Pump Station and Treatment)
- ◆ Town of Palm Beach D-12 Pump Station (Stormwater Pump Station Controls)
- ◆ Northern Palm Beach County Improvement District PGA Central Pump Station (Stormwater)
- ◆ Town of Palm Beach D-14 Pump Station Study (Generator Load Evaluation)
- ◆ Town of Palm Beach D-16 and D-18 Pump Station Generator Installation (New Generators at Each Station)
- ◆ City of Riviera Beach Water Treatment Plant VFD's (New High Service Pump VFD's and Controls)
- ◆ City of West Palm Beach Test Well Installation
- ◆ Loxahatchee Elementary School Well Addition (New R.O. System Well)



## Wastewater

- ◆ Town of Palm Beach Lift Station A4 (New Control Panel)
- ◆ City of West Palm Beach Wastewater Treatment Plant Generator Evaluation (Generator Paralleling)
- ◆ City of Sunrise Lift Stations (163 Lift Station Rehabilitations)
- ◆ B.C.O.E.S. Interim Improvements (Wastewater Treatment Plant Retreatment, Odor Control, Digester, 2000kW Generator)
- ◆ City of Lake Worth Master Lift Station (Pump Station Rehabilitation)
- ◆ Lake Worth Utilities Lift Station Standard (Control Panel Standard)
- ◆ North Bay Village Lift Station Construction Services (Construction Observation)
- ◆ Broward County Wastewater Treatment Plant Expansion Preliminary Design (Preliminary Design Report)
- ◆ B.C.O.E.S. Wastewater Transmission System Construction Services (Construction Administration and Observation)
- ◆ City of Miramar Wastewater Reclamation Facility (New Wastewater Treatment Plant)
- ◆ City of Miramar Wastewater Pump Station Modifications (Three New 250 hp Pumps with VFD's)
- ◆ B.C.O.E.S. Wastewater Transmission System Expansion (15 Pump Stations and Lift Stations)
- ◆ B.C.O.E.S. Wastewater Transmission System Report (Preliminary Design)
- ◆ B.C.O.E.S. Energy Audit and Rate Analysis (Energy Conservation)
- ◆ Seacoast Utility Lift Stations (Three Duplex Stations)
- ◆ B.C.O.E.S. Emergency Power System O & M Manual (Two New 5kV, 2000 kW, Generators)
- ◆ B.C.O.E.S. Harmonic Analysis (5kV Main Switchgear)
- ◆ South Central Regional Wastewater Treatment Plant Improvements (Odor Control Additions, New 5kV Distribution)
- ◆ City of Riviera Beach Master Lift Station Rehabilitation ( Master and Three Lift Stations)
- ◆ City of West Palm Beach ECRWWTP Upgrade (Headworks Modifications)
- ◆ City of Riviera Beach Lift Station No. 10 (Lift Station Rehabilitation w/New control Panel)
- ◆ St. Lucie County Lift Stations (Five (5) Pump Station Upgrades & One (1) New Pump Station)
- ◆ Village of Royal Palm Beach Lift Station Generators (New Generators for Existing Pump Stations)
- ◆ IBIS Development Sandhill Way Lift Station (New Pump Station for the City of West Palm Beach)
- ◆ Village of Royal Palm Beach WWTP Expansion (Construction Administration and Observation)
- ◆ City of West Palm Beach Lift Stations (Two (2) New Pump Stations)
- ◆ City of West Palm Beach ECRWWTP Expansion (Truck Loading and Chlorine Bldg. Modifications)
- ◆ City of Lake Worth Utilities Lift Stations (Seven (7) Pump Station Upgrades)
- ◆ Village of Royal Palm Beach Commons Lift Station (New Pump Station at Shopping Center)
- ◆ City of West Palm Beach Lift Station SCADA (New Telemetry System for Citywide Pump Stations)
- ◆ City of West Palm Beach Generator Switchgear Study (Interconnect Existing Generators w/FPL)
- ◆ Village of Royal Palm Beach Lift Station SCADA (New Telemetry System for Village Pump Stations)
- ◆ City of Lake Worth Utilities Walgreens Lift Station (New Pump Station at Shopping Center)
- ◆ City of West Palm Beach ECRWWTP Reclaimed Water Production Facility (Construction Administration and Observation)
- ◆ City of West Palm Beach Wastewater Treatment Plant (Headworks Modifications)
- ◆ City of Lake Worth Utilities Wastewater Pump Stations SCADA(New Telemetry System for City Lift Stations)
- ◆ St. Lucie County Landfill Lift Station (Leachate Pump Station)
- ◆ Limestone Creek Wastewater Pump Station (ENCON)
- ◆ City of West Palm Beach Flagler Drive Pump Stations No. 3 and No. 5 (Two (2) Lift Station Rehabilitations)
- ◆ Town of Palm Beach Wastewater Flow Meter (City of West Palm Beach Interconnect)
- ◆ City of Lake Worth Utilities Regional Flow Meters (Several Interconnects with Other Municipalities)
- ◆ City of Lake Worth Master Pump Station Evaluation (Wastewater Pump Station Rehabilitation Study)
- ◆ City of Delray Beach Lift Station Rehabilitations (Several Lift Stations Throughout the City)
- ◆ City of West Palm Beach WWTP Generator Switchgear Upgrade (Four (4) 1,800kW Turbine Units)
- ◆ South Martin Regional Utilities (SMRU) Headworks Modifications (New Influent Flow Meter, Mixers)
- ◆ City of West Palm Beach WWTP Expansion (Sludge Loading Facility, Chlorine Bldg. Improvements)
- ◆ Village of Royal Palm Beach WWTP Expansion (New Dewatering Bldg., Odor Control, Chemical Bldg.)
- ◆ South Martin Regional Utilities (SMRU) Lift Station Improvements (Several Pump Station Rehabilitations)
- ◆ Palm Beach County LS 5243 Generator (New Generator, Pump Control Panel)
- ◆ City of Lake Worth Utilities Wastewater Repump Station SCADA (New Telemetry and Instrumentation)
- ◆ City of West Palm Beach WWTP Transfer Pump Stations (Two(2) new 300 IIP pumps)
- ◆ City of West Palm Beach WWTP Clarifier Improvements (Six (6) Clarifier Rehabilitations)
- ◆ Indian River County Lift Station Rehabilitations (Several Pump Station Improvements)
- ◆ South Martin Regional Utilities (SMRU) WWTP Generator (Electrical Service Modifications for Temporary Generator)
- ◆ South Martin Regional Utilities (SMRU) WWTP Improvements (New Mixers and Odor Control System)
- ◆ City of Riviera Beach WW Pump Station Improvements (Two (?) Master Pump Station Rehabilitations)

## Solid Waste

- ◆ St. Lucie County Landfill Flare (Landfill Gas Burner)
- ◆ St. Lucie County Landfill Lift Stations (Two Duplex Stations Control Panels)
- ◆ St. Lucie County Landfill Leachate Pump Station (New Duplex Pump Control Panel)
- ◆ Solid Waste Authority Central and South County Transfer Stations - Fuel Tanks (Fuel Dispensing Systems)
- ◆ Solid Waste Authority Dyer Landfill Leachate Pump Station (Leachate Pump Controls)
- ◆ Solid Waste Authority Landfill Expansion (Leachate Pump Station Control Panels)
- ◆ St. Lucie County Landfill Closure (Landfill to Golf Course Conversion)
- ◆ Martin County Landfill Scale House and Hazardous Waste Facility (New Structures)
- ◆ St. Lucie County Landfill Baling Facility (Electrical Distribution and Generator)
- ◆ Palm Beach County Solid Waste Authority Dewatering System (Electrical Service to Temporary System)
- ◆ Palm Beach County Solid Waste Authority Remediation Wells (Twelve (12) New Wells and Control Panel)
- ◆ Palm Beach County Solid Waste Authority Lantana Hills Golf Course (New Golf Course on Closed Landfill)
- ◆ Broward County Landfill Leachate Pump Station (New Truck Loading Station with Telemetry)
- ◆ Palm Beach County Solid Waste Authority Compost Exhaust Evaluation (Electrical Distribution Study)
- ◆ Palm Beach County Solid Waste Authority Biofilter Remediation System (Electrical Service and Distribution)
- ◆ St. Lucie County Landfill Lift Stations (Electrical Service and Controls)
- ◆ Miami-Dade Department of Solid Waste Interceptor Wells (Fifteen (15) New Wells and Control Panel)
- ◆ Palm Beach County Solid Waste Authority Industrial Supply Wells (Electrical Distribution and Controls)
- ◆ Martin County Solid Waste Authority Scalehouse Generator (Standby Power Generator)
- ◆ Martin County Solid Waste Authority Transfer Station (New Transfer Station Power, Controls, and Lighting)
- ◆ Miami-Dade Department of Solid Waste Transfer Stations (Compactor Control Booth Refurbishment)
- ◆ Miami-Dade Department of Solid Waste Compactors (Power and Controls for Six (6) Replacement Compactors)
- ◆ St. Lucie County Landfill C & D Facility (Power, Lighting, and Controls for Construction and Demolition Debris Facility)
- ◆ Palm Beach County Solid Waste Authority Detection Manholes (Power and Controls Design)
- ◆ Palm Beach County Solid Waste Authority Irrigation System (Power Distribution Design)
- ◆ Palm Beach County Solid Waste Authority Biofilters (Control System Modifications Design)
- ◆ Palm Beach County Solid Waste Authority Lantana Transfer Station (Construction Administration)
- ◆ Broward County Department of Solid Waste Leachate Tanks (Controls Modifications)



## Lighting Design

### Building Lighting

The beauty of architecture is best seen at night when provided with the proper accent lighting. Our staff works closely with building architects to enhance the key elements of their work through award winning lighting design.

### Recreational Lighting

When designing recreational facilities, cost concerns and energy efficiency must strike a balance with maintaining adequate lighting levels. The staff at Smith Engineering Consultants has built a strong reputation for lighting design at local parks and ball fields, bicycle and walking paths, racquetball and tennis courts, swimming pools, and golf courses.

### Roadways

From small town streets to major highways, our staff has provided the design and construction management of numerous roadway lighting installations. In addition to our experience with highways, interchanges, arterials, rest stops, parking areas, toll plazas, and bridges, we have also provided specialty architectural lighting design for city and neighborhood improvement projects and architectural features.

### Airports

As south Florida's airports experience increasing airside traffic, the supporting landside facilities must also expand. Our staff has completed the lighting design for runways and taxiways, new hangars, parking garages, and terminals. We have also provided the necessary engineering for the installation of numerous navigational systems at various airports.

### Service Areas Provided

- ◆ *Building exterior and landscape lighting*
- ◆ *Parks and ball fields*
- ◆ *Conventional and highmast roadway illumination*
- ◆ *Airport lighting and navigation systems*
- ◆ *Lighting control systems*

### Projects Completed by Staff

- ◆ *Port of Miami Bridge*
- ◆ *Town of Lake Park Clock Tower*
- ◆ *Jupiter Community Park Racquetball Courts*
- ◆ *Village of Royal Palm Beach Ballfield Lighting*
- ◆ *I-75 Rest Area Lighting*
- ◆ *Dade County NW 87<sup>th</sup> Avenue Lighting*
- ◆ *Broward County SR A-1-A Lighting*
- ◆ *I-95/Davie Blvd. Interchange Lighting*
- ◆ *U.S. 1 Lighting from Broward Blvd. To Gateway Blvd.*
- ◆ *Fort Lauderdale International Airport Airfield Lighting and Cable Replacement*
- ◆ *Boca Raton Airport Expansion Lighting and Signage*
- ◆ *Pompano Air Park Airfield Lighting and Signage*

## Airport

- ◆ Palm Beach County, North County Airport Electrical Distribution (New General Aviation Airport)
- ◆ Palm Beach County, North County Airport Nav aids (TVOR/DME)
- ◆ Ft. Lauderdale Executive Airport Beacon Relocation (Rotating Beacon)
- ◆ Palm Beach County, North County Airport Nav aids (ILS/AWOS II)
- ◆ Palm Beach International Airport Nav aids (ILS/RVR)
- ◆ Pompano Airpark Runway Expansion (Extended Two Runway Ends)
- ◆ Ft. Lauderdale/Hollywood International Airport Electrical Maintenance Contract Preparation (Annual Contract)
- ◆ Boca Raton Airport Expansion Lighting and Signage (Vault Work/Generator)
- ◆ Ft. Lauderdale/Hollywood International Airport Airfield Lighting and Cable Replacement (New 5kV Cables, New Lighting)
- ◆ Pompano Airpark REILS Installation (Three Runway Ends)
- ◆ Boca Raton Airport Electric Utilities Conversion (Overhead to Underground Service Conversion)
- ◆ Palm Beach International Airport, Runway and Taxiway Expansion and new Lighting Vault
- ◆ Ft. Lauderdale/Hollywood International Airport, Runway and Taxiway Improvements and New Lighting Vault
- ◆ Pompano Airpark, New Taxiways Lighting & Signs
- ◆ Jacksonville International Airport, Landside Electrical Distribution System Improvements
- ◆ Jacksonville International Airport, Lighting Vault Additions and New Lighting Control System
- ◆ Craig Field Airport, New Lighting Vault
- ◆ Las Vegas/McCarron International Airport, New Lighting Vault

## Roadway and Park Lighting

- ◆ Dade County NW 62 Street Lighting (Roadway Lighting)
- ◆ Dade County NW 87 Avenue Lighting (Roadway Lighting)
- ◆ Davie Vehicle Inspection Station (Parking Lot Lighting)
- ◆ F.D.O.T. I-75 Rest Area Lighting (High Mast Lighting)
- ◆ Jupiter Community Park Phase II, Racquetball Courts (Sportsfield Lighting)
- ◆ F.D.O.T. I-95/Davie Blvd. Internal Bridge Electrical (Specialty Lighting)
- ◆ State Road 55 Bridge Navigational Lighting (Specialty Lighting)
- ◆ Dade County NW 27 Ave. & 207 Street Intersection Lighting (Roadway Lighting)
- ◆ Port of Miami Bridge Lighting (Architectural Lighting)
- ◆ City of Escalon Street Lighting (Decorative & Conventional Roadway Lighting)
- ◆ F.D.O.T. US 1 Broward Blvd. to Gateway (Roadway Lighting)
- ◆ F.D.O.T. Broward County State Road A.I.A. (Roadway Lighting)
- ◆ F.D.O.T. Martin County U.S. 1 (Roadway Lighting)
- ◆ Port of Palm Beach Molasses Tank (Tank Relocation)
- ◆ Indian Trails Improvement District Ball Field Lighting (Design/Build)
- ◆ Village of Royal Palm Beach Katz Field (Ball Field Lighting)
- ◆ Village of Royal Palm Beach Willows Park (Ball Field Lighting Evaluation)
- ◆ Town of Lake Park, Kelsey Park (Pathway/Security Lighting)
- ◆ Walgreens Shopping Center (Parking Lot Lighting)
- ◆ F.D.O.T. Plans Review (Misc. Lighting Projects)
- ◆ City of West Palm Beach Mary Brandon Park (Pathway/Security Lighting)
- ◆ City of West Palm Beach Chillingworth Park (Pathway/Security Lighting)
- ◆ St. Lucie County Dollman Park (Parking Lot Lighting)
- ◆ IBIS Development (Decorative Roadway Lighting)
- ◆ City of Delray Beach Atlantic Avenue (Decorative Roadway Lighting)
- ◆ F.D.O.T. Palm Beach Gardens Boulevard @ I-95 (Decorative & Conventional Roadway Lighting)
- ◆ F.D.O.T. Palm Beach Gardens Boulevard to U.S. 1 (Conventional Roadway Lighting)
- ◆ City of West Palm Beach Olive Avenue (Decorative Roadway Lighting)
- ◆ The Commons of Royal Palm Beach (Shopping Center Parking Lot Lighting)

## **ADDITIONAL STAFF EXPERIENCE**



## Power Generation

- ◆ Boca Raton Airport Expansion (One (1) 60kW, 240V, Single Phase)
- ◆ BCOES Emergency Power System (Two (2) 2000kW, Three (3) 1800kW, 4160V)
- ◆ Arvin Edison WSD Aqueduct Turnout (One (1) 25kW, 240V, Single Phase)
- ◆ NPBCWCD Stormwater Pump Stations (Two (2) 150kW, 480V)
- ◆ St. Lucie County Landfill Closure (One (1) 150kW, 480V)
- ◆ BCOES Wastewater Transmission System Expansion (One (1) 750kW, One (1) 600kW, 480V)
- ◆ City of Miramar Wastewater Pump Station (One (1) 250kW, 480V)
- ◆ City of Miramar Wastewater Treatment Plant (Four (4) 1275kW, 4160V)
- ◆ FKAA R.O. Plant Rehabilitation (Two (2) 1000kW, One (1) 300kW, 4160V)
- ◆ South Florida Water Management District STA-1W Control Structures (Six (6) 20kW, 240V, Single Phase)
- ◆ Breaker's Hotel Stormwater Pump Station (One (1) 175kW, 480V)
- ◆ Oakton Lakes Stormwater Pump Station (One (1) 150kW, 480V)
- ◆ BCOES Wastewater Treatment Plant Improvements (One (1) 2000kW, 4160V)
- ◆ City of West Palm Beach Wastewater Treatment Plant Generator Evaluation (Five (5) 1800kW, 4160V Turbines)
- ◆ Lake Worth Utilities Unit S-3 Overhaul (One (1) 30MW, 13.2kV Turbine)
- ◆ Jackson Memorial Hospital Generation Study (Seven (7) Services, 4160V and 480V)
- ◆ Village of Wellington Public Works Complex (One (1) 300kW, 208V)
- ◆ Palm Beach Town Hall Generator Study (One (1) 75kW, 240V, Single Phase)
- ◆ Blue Lake Corporate Center (Eight (8) 2000kW, 13.2kV)
- ◆ Town of Lake Park Fire Station (One (1) 150kW, 208V)
- ◆ Baywinds Stormwater Pump Stations (Two (2) 150kW, 480V)
- ◆ Village of Wellington Stormwater Pump Station No. 5 (One (1) 125kW, 480V)
- ◆ Pompano Airpark Airfield Lighting Vault (One (1) 150kW, 208V)
- ◆ Hamilton Bay Stormwater Pump Station (One (1) 125kW, 480V)
- ◆ Martin County Landfill Scalehouse (One (1) 125kW, 208V)
- ◆ St. Lucie County Landfill Baling Facility (One (1) 500kW, 480V)
- ◆ Village of Royal Palm Beach Lift Stations (Three (3) 75kW, 480V)
- ◆ Mirasol Stormwater Pump Station (One (1) 750kW, 480V)
- ◆ Southeast Caterers Plant (One (1) 300kW, 480V)
- ◆ Lynn University Dormitory (One (1) 250kW, 480V)
- ◆ City of WPB ECR WWTP Switchgear Automation (Four (4) 1800kW, 4,160V)
- ◆ NPBCID PGA Central Stormwater Pump Station (One (1) 600kW, 480V)
- ◆ Town of Palm Beach Stormwater Pump Station No. D-14 (One (1) 500kW, 480V)
- ◆ Town of Palm Beach Stormwater Pump Station No. D-16 (One (1) 125kW, 480V)
- ◆ Town of Palm Beach Stormwater Pump Station No. D-18 (One (1) 125kW, 480V)
- ◆ BCSB Coral Springs High School (One (1) 125kW, 480V)
- ◆ Alfresh Foods Plant (One (1) 250kW, 480V)
- ◆ Village of Wellington Stormwater Pump Station No. 6 (One (1) 450kW, 480V)
- ◆ Village of Wellington Stormwater Pump Station No. 3 (One (1) 450kW, 480V)
- ◆ Village of Wellington Stormwater Pump Station No. 4 (One (1) 450kW, 480V)
- ◆ Village of Golf Water Treatment Plant (One (1) 350kW, 480V)
- ◆ Town of Palm Beach Fire Station One (One (1) 150kW, 480V)
- ◆ Town of Ocean Ridge Stormwater Pump Station (One (1) 450kW, 480V)
- ◆ Martin County Landfill Transfer Station (One (1) 150kW, 480V)
- ◆ City of Lake Worth WTP (One (1) 1,000kW, 480V)
- ◆ Virtual Bank Offices (One (1) 150kW, 480V)
- ◆ Palm Beach County Fire Station No. 14 (One (1) 150kW, 208V)
- ◆ Town of Palm Beach Clarendon Ave. Pump Station (One (1) 300kW, 480V)
- ◆ Palm Beach County LS 5243 Generator (One (1) 235kW, 480V)
- ◆ City of West Palm Beach WTP Generators (Two (2) 2,000 kW, 4,160V)
- ◆ South Martin Regional Utilities (SMRU) WTP & WWTP Generators (Temporary Generator Connections)
- ◆ NPBCID Ibis Pump Station Generator (One (1) 150kW, 480V)
- ◆ City of Lake Worth Utilities Operations Center (One (1) 65kW, 240V)
- ◆ City of Lake Worth Utilities Water Booster Stations (Two (2) 150 kW, 480V)
- ◆ Palm Beach County Maintenance Facility Generator (One (1) 125kW, 208V)
- ◆ Lake Worth Drainage District Headquarters (One (1) 100kW, 240V)
- ◆ PBC Solid Waste Authority Biosolids Processing Facility (One (1) 350kW, 480V)
- ◆ NPBCID Pump Station Generator Connections (Temporary Connections at Five (5) Pump Stations)
- ◆ City of Atlantis Town Hall and Police Station (One (1) 125kW, 240V)
- ◆ Village of Royal Palm Beach WTP Generator Study (Preliminary Design and Cost Estimate)

## Miscellaneous

- ◆ Fort Lauderdale / Hollywood International Airport Electrical Maintenance Contract Preparation (Annual Contract)
- ◆ Boca Raton Airport Electric Utilities Conversion (Overhead to Underground Service Conversion)
- ◆ West Palm Beach NEC Violations (NEC Corrections Design)
- ◆ Martin County High School HVAC Upgrade (Chiller Replacement)
- ◆ St. Lucie County Service Garage Remediation Construction Services (Construction Observation)
- ◆ West Palm Beach Train Station Renovations (Historical Building Renovation)
- ◆ Town of Golden Beach FPL UG Installation Cost Estimate Review (Cost Estimate/Negotiation)
- ◆ West Palm Beach Echo Lake Drive Street Closure (Automatic Electric Gate)
- ◆ FCAA Administration Building HVAC Upgrade (Power and Control Wiring to Seven (7) Air Conditioning Systems)
- ◆ Lake Worth Utilities Storage Building (Lights and Receptacles)
- ◆ Fresno State Telecom Design (Campus Infrastructure Design)
- ◆ Town of Jupiter FPL 138kV Line Negotiation (Underground Transmission Line Cost Estimate/Negotiation)
- ◆ Palm Beach County Sheriff's Shoot House (New Shooting Range Structure)
- ◆ Blue Lake Corporate Center (General Consultant Services)
- ◆ Town of Lake Park Pavilion (Architectural Park Buildings)
- ◆ Republic Security Bank ATM's (Lighting at Several Locations)
- ◆ City of West Palm Beach Train Station Lighting (Architectural & Parking Lot Evaluation)
- ◆ Grand Oaks Landscape Lighting (Preliminary Report & Design)
- ◆ Village of Royal Palm Beach Building Department/Fire Station (HVAC Improvements)
- ◆ Town of Lake Park Clock Tower (Architectural Lighting Design)
- ◆ The Admiral Condominium (Energy Conservation Study)
- ◆ Town of Lake Park Town Hall (Historical Building Renovation)
- ◆ City of West Palm Beach Clock Tower (Architectural Electrical)
- ◆ City of West Palm Beach Centennial Fountains (Architectural Lighting)
- ◆ St. Vincent Ferrer Church & School (New Gymnasium)
- ◆ St. Thomas Aquinas High School (Classroom Additions)
- ◆ St. Elizabeth Ann Seton Church (New Church & Assembly Hall)
- ◆ Omnipoint Communication Cell Towers (Numerous Locations)
- ◆ City of Lake Worth Y2K Study (Control Systems Report)
- ◆ Palm Beach County Library Annex (Electrical/HVAC Improvements)
- ◆ Key West Brewery (Electrical Distribution)
- ◆ Continental Materials Palm Beach Aggregate Plant (Electrical Distribution & Lighting)
- ◆ Lodestar Cellular Towers (Numerous Locations)
- ◆ City of West Palm Beach Loxahatchee Nature Preserve (Electrical Distribution & Lighting)
- ◆ Boca Raton News Press Room (Record Drawings)
- ◆ BJ's Wholesale Irrigation Pump (Electrical Service)
- ◆ Southeast Caterer's (Generator Installation)
- ◆ AT&T Cellular Towers (Numerous Locations)



ARCHITECT – ENGINEER QUALIFICATIONS

PART I – CONTRACT SPECIFIC QUALIFICATIONS

A. CONTRACT INFORMATION

1. TITLE AND LOCATION (City and State)

Electrical, Instrumentation and Telemetry Consulting Services, Palm Beach County, Florida

2. PUBLIC NOTICE DATE

3. SOLICITATION OR PROJECT NUMBER

B. ARCHITECT – ENGINEER POINT OF CONTACT

4. NAME AND TITLE

Larry M. Smith, P.E./President

5. NAME OF FIRM

Smith Engineering Consultants, Inc.

6. TELEPHONE NUMBER

(561) 616-3911

7. FAX NUMBER

(561) 616-3912

8. E-MAIL ADDRESS

larry@smithengineeringconsultants.com

C. PROPOSED TEAM

(Complete this section for the prime contractor and all key subcontractors.)

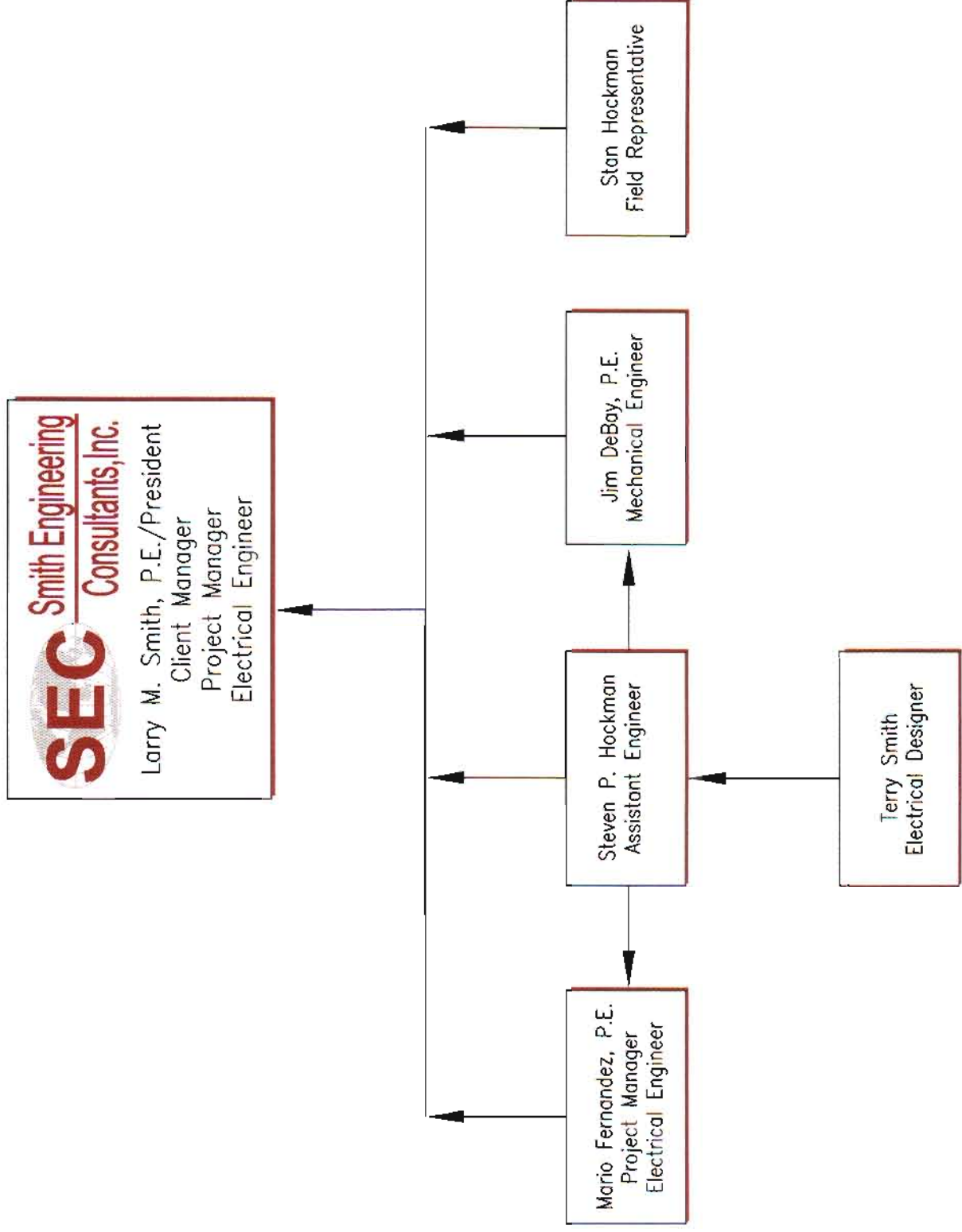
	(Check)			9. FIRM NAME	10. ADDRESS	11. ROLE IN THIS CONTRACT
	PRIME	J-V PARTNER	SUBCON-TRACTOR			
a.	X			Smith Engineering Consultants, Inc.  CHECK IF BRANCH OFFICE	2161 Palm Beach Lakes Blvd., Suite 312 West Palm Beach, FL 33409	Electrical, Instrumentation and Telemetry
b.				  CHECK IF BRANCH OFFICE		
c.				  CHECK IF BRANCH OFFICE		
d.				  CHECK IF BRANCH OFFICE		
e.				  CHECK IF BRANCH OFFICE		
f.				  CHECK IF BRANCH OFFICE		

D. ORGANIZATIONAL CHART OF PROPOSED TEAM

(Attached)



# ORGANIZATIONAL CHART



**E. RESUMES OF KEY PERSONNEL PROPOSED FOR THIS CONTRACT**

*(Complete one Section E for each key person.)*

12. NAME <b>Larry M. Smith, P.E.</b>	13. ROLE IN THIS CONTRACT Electrical Engineer	14. YEARS EXPERIENCE	
		a. TOTAL 20	b. WITH CURRENT FIRM 8
15. FIRM NAME AND LOCATION <i>(City and State)</i> <b>Smith Engineering Consultants, Inc, 2161 Palm Beach Lakes Blvd., Suite 312, West Palm Beach, FL 33409</b>			
16. EDUCATION <i>(DEGREE AND SPECIALIZATION)</i> Bachelor of Science in Electrical Engineering		17. CURRENT PROFESSIONAL REGISTRATION <i>(STATE AND DISCIPLINE)</i> Florida/Electrical Engineering	
18. OTHER PROFESSIONAL QUALIFICATIONS <i>(Publications, Organizations, Training, Awards, etc.)</i> Post-graduate studies at FAU in telecommunications, Tau Beta Pi (Engineering Honor Society), IEEE, Florida Engineering Society (Past President of the Palm Beach Chapter), Florida Building Code electrical technical advisory committee, FES state energy committee.			

**19. RELEVANT PROJECTS**

	(1) TITLE AND LOCATION <i>(City and State)</i>	(2) YEAR COMPLETED	
		PROFESSIONAL SERVICES	CONSTRUCTION <i>(if Applicable)</i>
a.	SFWMD Stormwater Treatment Area (STA)-1W Palm Beach County, Florida	1999	2005
	(3) BRIEF DESCRIPTION <i>(Brief scope, size, cost, etc.)</i> AND SPECIFIC ROLE Electrical design for the gate control structure and trash rakes. This included the electrical service and distribution, controls, lighting, instrumentation, and telemetry systems. The telemetry system was designed using the District's standard RTU design.		
	<input checked="" type="checkbox"/> Check if project performed with current firm		
b.	SFWMD P.S. 319 Loxahatchee, Florida	2005	2005
	(3) BRIEF DESCRIPTION <i>(Brief scope, size, cost, etc.)</i> AND SPECIFIC ROLE Construction administration for the electrical systems of this pump station designed by the Army Corps of Engineers. We observed the electrical installations and prepared the contract record drawings for review by the Corps. Corrections were made to the electrical design drawings in accordance with the actual construction observed by us and as reported by the contractor.		
	<input checked="" type="checkbox"/> Check if project performed with current firm		
c.	Mirasol Pump Station Palm Beach Gardens, Florida	2001	2003
	(3) BRIEF DESCRIPTION <i>(Brief scope, size, cost, etc.)</i> AND SPECIFIC ROLE Electrical design for a new stormwater pump station. This pump station consisted of six (6) electric motor operated pumps with both upstream and downstream water level monitoring. A backup diesel generator was designed to provide power for full pumping capacity. Reduced-voltage motor starters were designed to reduce the starting inrush current for the large electric motors. Electrical design included motor operated gates for control structures, electrical service and distribution, lighting, controls, instrumentation, and telemetry systems.		
	<input checked="" type="checkbox"/> Check if project performed with current firm		
d.	City of Lake Worth Master Pump Station Lake Worth, Florida	2002	2003
	(3) BRIEF DESCRIPTION <i>(Brief scope, size, cost, etc.)</i> AND SPECIFIC ROLE Electrical design including power, controls, instrumentation and telemetry for the conversion of the existing wetwell pump station to an in-line booster station. Variable frequency drives (VFD's) were used to match the varying wastewater flow into and out of the pump station. An upgraded telemetry system was designed to replace the existing, aging system, and to provide control and status reporting to the existing central station.		
	<input checked="" type="checkbox"/> Check if project performed with current firm		
e.	Gateway Community Development District Ft. Myers, Florida	2004	2005
	(3) BRIEF DESCRIPTION <i>(Brief scope, size, cost, etc.)</i> AND SPECIFIC ROLE Electrical design including power, controls, instrumentation and telemetry for the rehabilitation of an existing reclaimed water pump station. Five (5) new pumps were provided with variable frequency drives (VFD's) to provide water to the local community, including golf course irrigation. A hydropneumatic tank with an air compressor system was installed to help maintain water pressure.		
	<input checked="" type="checkbox"/> Check if project performed with current firm		



**E. RESUMES OF KEY PERSONNEL PROPOSED FOR THIS CONTRACT**

*(Complete one Section E for each key person.)*

12. NAME <b>James L. DeBay, P.E.</b>	13. ROLE IN THIS CONTRACT Mechanical Engineer	14 YEARS EXPERIENCE	
		a TOTAL 37	b WITH CURRENT FIRM 8
15. FIRM NAME AND LOCATION <i>(City and State)</i> <b>Smith Engineering Consultants, Inc., 2161 Palm Beach Lakes Blvd., Suite 312, West Palm Beach, FL 33409</b>			
16. EDUCATION <i>(DEGREE AND SPECIALIZATION)</i>  Bachelor of Science in Mechanical Engineering		17. CURRENT PROFESSIONAL REGISTRATION <i>(STATE AND DISCIPLINE)</i>  Florida/Mechanical Engineering	
18. OTHER PROFESSIONAL QUALIFICATIONS <i>(Publications, Organizations, Training, Awards, etc.)</i> Two (2) term member of the State of Florida Board of Building Codes & Standards, National Fire Protection Association (NFPA), Past President of the American Society of Heating, Refrigeration, and Air Conditioning Engineers (ASHRAE), Co-author of the Florida Model Energy Code.			

**19. RELEVANT PROJECTS**

	(1) TITLE AND LOCATION <i>(City and State)</i>	(2) YEAR COMPLETED	
		PROFESSIONAL SERVICES	CONSTRUCTION <i>(if Applicable)</i>
a.	Mirasol Pump Station Palm Beach Gardens, Florida	2001	2003
	(3) BRIEF DESCRIPTION <i>(Brief scope, size, cost, etc.)</i> AND SPECIFIC ROLE Mechanical design for a new stormwater pump station. This pump station consisted of six (6) electric motor operated pumps with both upstream and downstream water level monitoring. A backup diesel generator was designed to provide power for full pumping capacity. Reduced-voltage motor starters were designed to reduce the starting inrush current for the large electric motors. Mechanical design included motor operated gates for control structures, air conditioning of the main electrical room, and plumbing.	<input checked="" type="checkbox"/> Check if project performed with current firm	
b.	Village of Wellington Pump Station No. 6 Wellington, Florida	2004	2005
	(3) BRIEF DESCRIPTION <i>(Brief scope, size, cost, etc.)</i> AND SPECIFIC ROLE Mechanical design for several new stormwater pump stations throughout the Village of Wellington. These pump stations consisted of electric motor operated pumps with both upstream and downstream water level monitoring. A backup diesel generator was designed at each pump station to provide power for full pumping capacity. Mechanical design included ventilation and plumbing throughout the pump stations.	<input checked="" type="checkbox"/> Check if project performed with current firm	
c.	City of West Palm Beach Renaissance Pump Station West Palm Beach, Florida	2002	2004
	(3) BRIEF DESCRIPTION <i>(Brief scope, size, cost, etc.)</i> AND SPECIFIC ROLE Mechanical design for a new stormwater pump station. This pump station consisted of three (3) electric motor operated pumps with both upstream and downstream water level monitoring. Provisions for a future backup diesel generator were designed to provide power for full pumping capacity. Mechanical design included motor operated gates for control structures, ventilation of the main electrical room, and plumbing.	<input checked="" type="checkbox"/> Check if project performed with current firm	
d.	City of Lake Worth Master Pump Station Lake Worth, Florida	2002	2003
	(3) BRIEF DESCRIPTION <i>(Brief scope, size, cost, etc.)</i> AND SPECIFIC ROLE Mechanical design for two (2) redundant air-conditioning systems to cool the electrical equipment room. These split(DX) systems were of a low profile, space saving design so as to maximize the available space for the electrical equipment. Air conditioning of the variable frequency drives (VFD's) serves to extend the life of these expensive devices.	<input checked="" type="checkbox"/> Check if project performed with current firm	
e.	Gateway Community Development District Ft. Myers, Florida	2004	2005
	(3) BRIEF DESCRIPTION <i>(Brief scope, size, cost, etc.)</i> AND SPECIFIC ROLE Mechanical design for the two (2) redundant air-conditioning systems to cool the electrical equipment room of the reclaimed water pump station. These split(DX) systems were of a low profile, space saving design so as to maximize the available space for the electrical equipment. Air conditioning of the variable frequency drives (VFD's) serves to extend the life of these expensive devices.	<input checked="" type="checkbox"/> Check if project performed with current firm	



**E. RESUMES OF KEY PERSONNEL PROPOSED FOR THIS CONTRACT**  
*(Complete one Section E for each key person.)*

12. NAME <b>Mario Fernandez, P.E.</b>	13. ROLE IN THIS CONTRACT Electrical Engineer	14. YEARS EXPERIENCE	
		a. TOTAL 41	b. WITH CURRENT FIRM 5
15. FIRM NAME AND LOCATION <i>(City and State)</i> <b>Smith Engineering Consultants, Inc, 2161 Palm Beach Lakes Blvd., Suite 312, West Palm Beach, FL 33409</b>			
16. EDUCATION <i>(DEGREE AND SPECIALIZATION)</i> Bachelor of Science in Electrical Engineering		17. CURRENT PROFESSIONAL REGISTRATION <i>(STATE AND DISCIPLINE)</i> Florida/Electrical Engineering	
18. OTHER PROFESSIONAL QUALIFICATIONS <i>(Publications, Organizations, Training, Awards, etc.)</i> Institute of Electrical and Electronics Engineers (IEEE)			

**19. RELEVANT PROJECTS**

	(1) TITLE AND LOCATION <i>(City and State)</i>	(2) YEAR COMPLETED	
		PROFESSIONAL SERVICES	CONSTRUCTION <i>(if Applicable)</i>
	Town of Palm Beach Pump Station Generators Palm Beach, Florida	2003	2004
a.	(3) BRIEF DESCRIPTION <i>(Brief scope, size, cost, etc.)</i> AND SPECIFIC ROLE		
	<p><input checked="" type="checkbox"/> Check if project performed with current firm</p> <p>Electrical design, including power, controls, instrumentation and telemetry for the installation of two (2) new standby power generators and remote telemetry units (RTU's), one (1) at each of two (2) existing stormwater pump stations in the Town of Palm Beach. A new electrical service was designed at each pump station, including a new automatic transfer switch, to provide both normal and emergency power to the submersible pumps. Data Flow telemetry systems were specified to provide control and status reporting to the existing central station.</p>		
	City of Lake Worth Water Booster Station Generators Lake Worth, Florida	2007	2008
b.	(3) BRIEF DESCRIPTION <i>(Brief scope, size, cost, etc.)</i> AND SPECIFIC ROLE		
	<p><input checked="" type="checkbox"/> Check if project performed with current firm</p> <p>Electrical design, including power, controls, instrumentation and telemetry for the installation of two (2) new standby power generators and remote telemetry units (RTU's), one (1) at each of two (2) existing water booster pump stations in the City of Lake Worth. A new electrical service was designed at each pump station, including a new automatic transfer switch, to provide both normal and emergency power to the existing water booster pumps. Motorola MOSCAD telemetry systems were specified to provide control and status reporting.</p>		
	City of Lake Worth WTP Generator Lake Worth, Florida	2006	2007
c.	(3) BRIEF DESCRIPTION <i>(Brief scope, size, cost, etc.)</i> AND SPECIFIC ROLE		
	<p><input checked="" type="checkbox"/> Check if project performed with current firm</p> <p>Electrical design, including power, controls, lighting, instrumentation and SCADA for the installation of a new standby power generator to serve the existing water treatment plant. Also included within this project was the electrical design for the replacement of five (5) existing pumps and motors. New VFD's and solid-state, reduced voltage motor starters were installed within the existing motor control center to serve the pumps. A 1,000kW diesel generator was installed to provide backup power to the entire water treatment plant.</p>		
	City of Riviera Beach Master Pump Stations Riviera Beach, Florida	2005	2006
d.	(3) BRIEF DESCRIPTION <i>(Brief scope, size, cost, etc.)</i> AND SPECIFIC ROLE		
	<p><input checked="" type="checkbox"/> Check if project performed with current firm</p> <p>Electrical design, including power, controls, instrumentation and telemetry for the rehabilitation of two (2) existing wastewater pump stations No. 1A and No. 50 in the City of Riviera Beach. New VFD's were designed to control replacement pumps and motors. A new standby power generator was designed for each station to replace the existing, aging units. VFD's and instrumentation were successfully integrated into the existing SCADA/telemetry system.</p>		
	Village of Wellington Pump Station Telemetry Wellington, Florida	2002	2003
e.	(3) BRIEF DESCRIPTION <i>(Brief scope, size, cost, etc.)</i> AND SPECIFIC ROLE		
	<p><input checked="" type="checkbox"/> Check if project performed with current firm</p> <p>Electrical design including power, controls, instrumentation and telemetry for the installation of a new telemetry system for the Village of Wellington's stormwater pump stations. A new base station including computer workstations, software, radio telemetry unit (RTU), and antenna tower were installed at the existing public works complex. RTU's were installed in the field at several pump stations. These communicated with the base station to provide remote control and status reporting for pumps, generators, water level sensors, and gates.</p>		





**F. EXAMPLE PROJECTS WHICH BEST ILLUSTRATE PROPOSED TEAM'S QUALIFICATIONS FOR THIS CONTRACT**  
*(Present as many projects as requested by the agency, or 10 projects, if not specified. Complete one Section F for each project.)*

20. EXAMPLE PROJECT KEY NUMBER  
**1**

21. TITLE AND LOCATION <i>(City and State)</i> Flagler Drive Wastewater Pump Stations West Palm Beach, Florida	22. YEAR COMPLETED	
	PROFESSIONAL SERVICES 2002	CONSTRUCTION (if Applicable) 2003

**23. PROJECT OWNER'S INFORMATION**

a. PROJECT OWNER City of West Palm Beach	b. POINT OF CONTACT NAME Ken Rearden, P.E.	c. POINT OF CONTACT TELEPHONE NUMBER (561) 822-1400
---	---	--

24. BRIEF DESCRIPTION OF PROJECT AND RELEVANCE TO THIS CONTRACT *(Include scope, size, and cost)*

This award winning project included the replacement of a wastewater force main pipeline, and the rehabilitation of two (2) existing pump stations. Pump Station No. 3's submersible pumps were replaced to meet the new flow and head requirements. Control panel upgrades were designed to accommodate the parameters of the new submersible pump motors.

At Pump Station No. 5, a new electrical service (including a City-owned step-up transformer) was designed to handle the additional electrical load of the station. A replacement of the three (3) existing VFD's was accomplished within the existing motor control center. Provisions to connect a portable generator through a manual transfer switch were also provided.

**Total Project Cost = \$1,300,000**



**25 FIRMS FROM SECTION C INVOLVED WITH THIS PROJECT**

a.	(1) FIRM NAME Smith Engineering Consultants, Inc.	(2) FIRM LOCATION <i>(City and State)</i> West Palm Beach, Florida	(3) ROLE Electrical Engineering
b.	(1) FIRM NAME	(2) FIRM LOCATION <i>(City and State)</i>	(3) ROLE



F. EXAMPLE PROJECTS WHICH BEST ILLUSTRATE PROPOSED TEAM'S QUALIFICATIONS FOR THIS CONTRACT

(Present as many projects as requested by the agency, or 10 projects, if not specified. Complete one Section F for each project.)

20. EXAMPLE PROJECT KEY NUMBER

2

21. TITLE AND LOCATION (City and State)

Palm Beach County LS 5243 Generator Installation  
Delray Beach, Florida

22. YEAR COMPLETED

PROFESSIONAL SERVICES

CONSTRUCTION (if Applicable)

2007

2008

23. PROJECT OWNER'S INFORMATION

a. PROJECT OWNER

Palm Beach County

b. POINT OF CONTACT NAME

John Rich, P.E.

c. POINT OF CONTACT TELEPHONE NUMBER

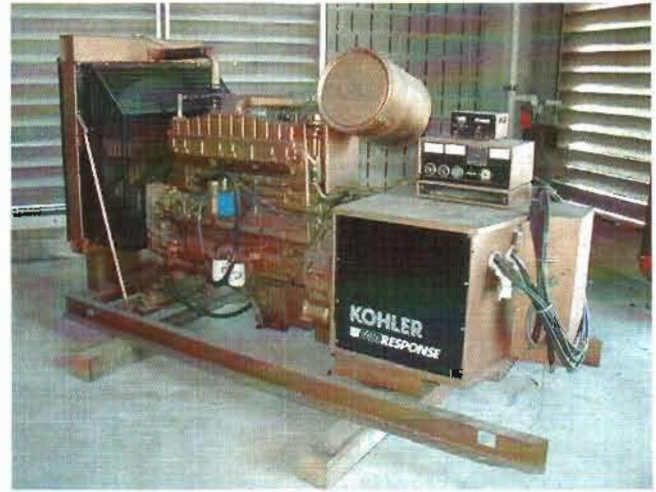
(561) 493-6116

24. BRIEF DESCRIPTION OF PROJECT AND RELEVANCE TO THIS CONTRACT (Include scope, size, and cost)

The design is presently being completed for the installation of a standby power generator and diesel fuel tank at the County's existing Lift Station No. 5243. The existing chemical building is being modified to house the relocated generator. A new above ground, diesel fuel tank will be installed on site to provide adequate fuel for the required duration of operation.

A new electrical service was designed, including a new automatic transfer switch, to provide both normal and emergency power to the wastewater pumps. A new pump control panel was designed in accordance with the County's latest standards.

**Total Project Cost = \$100,000**



25. FIRMS FROM SECTION C INVOLVED WITH THIS PROJECT

	(1) FIRM NAME	(2) FIRM LOCATION (City and State)	(3) ROLE
a.	Smith Engineering Consultants, Inc.	West Palm Beach, Florida	Electrical and Mechanical Engineering
b.	(1) FIRM NAME	(2) FIRM LOCATION (City and State)	(3) ROLE





**F. EXAMPLE PROJECTS WHICH BEST ILLUSTRATE PROPOSED TEAM'S QUALIFICATIONS FOR THIS CONTRACT**

*(Present as many projects as requested by the agency, or 10 projects, if not specified. Complete one Section F for each project.)*

20. EXAMPLE PROJECT KEY NUMBER

3

21. TITLE AND LOCATION *(City and State)*

Town of Palm Beach Pump Station Generators  
Palm Beach, Florida

22. YEAR COMPLETED

PROFESSIONAL SERVICES

CONSTRUCTION (if Applicable)

2003

2004

**23. PROJECT OWNER'S INFORMATION**

a. PROJECT OWNER

Town of Palm Beach

b. POINT OF CONTACT NAME

Jim Bowser, P.E.

c. POINT OF CONTACT TELEPHONE NUMBER

(561) 838-5440

24. BRIEF DESCRIPTION OF PROJECT AND RELEVANCE TO THIS CONTRACT *(Include scope, size, and cost)*

Two (2) new standby power generators and remote telemetry units (RTU's) were provided, one (1) at each of two (2) existing stormwater pump stations at Jungle Road and El Brillo Road along the intracoastal waterway in Palm Beach. Each generator consisted of a self-contained, skid-mounted, diesel fuel tank below the generator enclosed with a weatherproof, sound-attenuating enclosure.

A new electrical service was designed at each pump station including a new automatic transfer switch, to provide both normal and emergency power to the submersible pumps. Data Flow telemetry systems were specified to provide control and status reporting to the existing central station.

**Total Project Cost = \$175,000**



**25. FIRMS FROM SECTION C INVOLVED WITH THIS PROJECT**

	(1) FIRM NAME	(2) FIRM LOCATION <i>(City and State)</i>	(3) ROLE
a.	Smith Engineering Consultants, Inc.	West Palm Beach, Florida	Electrical Engineering
b.	(1) FIRM NAME	(2) FIRM LOCATION <i>(City and State)</i>	(3) ROLE



**F. EXAMPLE PROJECTS WHICH BEST ILLUSTRATE PROPOSED TEAM'S QUALIFICATIONS FOR THIS CONTRACT**

*(Present as many projects as requested by the agency, or 10 projects, if not specified. Complete one Section F for each project.)*

20. EXAMPLE PROJECT KEY NUMBER

4

21. TITLE AND LOCATION *(City and State)*

City of Lake Worth Master & Re-Pump Stations  
Lake Worth, Florida

22. YEAR COMPLETED

PROFESSIONAL SERVICES

CONSTRUCTION (if Applicable)

2002

2003

**23. PROJECT OWNER'S INFORMATION**

a. PROJECT OWNER

City of Lake Worth

b. POINT OF CONTACT NAME

Mike Thew, P.E.

c. POINT OF CONTACT TELEPHONE NUMBER

(561) 586-1671

24. BRIEF DESCRIPTION OF PROJECT AND RELEVANCE TO THIS CONTRACT *(Include scope, size, and cost)*

Two (2) existing wastewater pump stations were recently rehabilitated. The work included the installation of new variable frequency drives (VFD's) and remote telemetry units (RTU's) for the control of existing wastewater pumps. At the Master-Pump Station a new electrical room was enclosed and air-conditioned to house the new VFD's. The existing electrical service was modified to distribute power to the new equipment.

At the Repump Station new VFD's were installed within the pump station and fed from the existing electrical service which was modified for this purpose. Upgraded telemetry systems were designed for both stations to replace the existing, aging systems, and to provide control and status reporting to the existing central station.

**Total Project Cost = \$500,000**



**25. FIRMS FROM SECTION C INVOLVED WITH THIS PROJECT**

	(1) FIRM NAME	(2) FIRM LOCATION <i>(City and State)</i>	(3) ROLE
a.	Smith Engineering Consultants, Inc.	West Palm Beach, Florida	Electrical and Mechanical Engineering





**F. EXAMPLE PROJECTS WHICH BEST ILLUSTRATE PROPOSED TEAM'S QUALIFICATIONS FOR THIS CONTRACT**

*(Present as many projects as requested by the agency, or 10 projects, if not specified. Complete one Section F for each project.)*

20. EXAMPLE PROJECT KEY NUMBER

5

21. TITLE AND LOCATION *(City and State)*

City of Lake Worth Water Booster Stations  
Lake Worth, Florida

22. YEAR COMPLETED

PROFESSIONAL SERVICES

CONSTRUCTION (if Applicable)

2007

2008

**23. PROJECT OWNER'S INFORMATION**

a. PROJECT OWNER

City of Lake Worth

b. POINT OF CONTACT NAME

Mike Thew, P.E.

c. POINT OF CONTACT TELEPHONE NUMBER

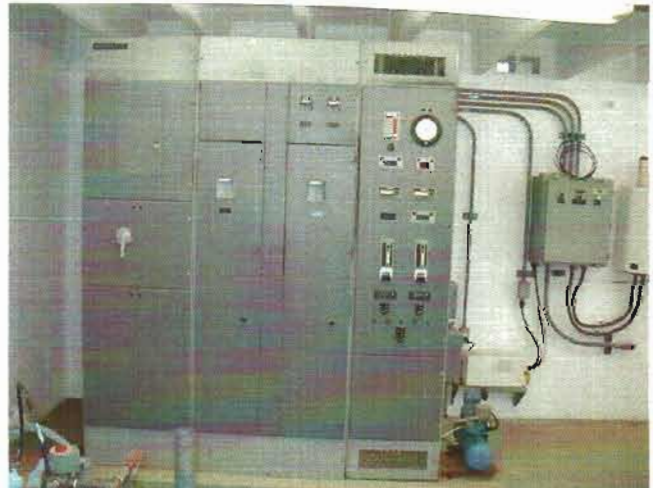
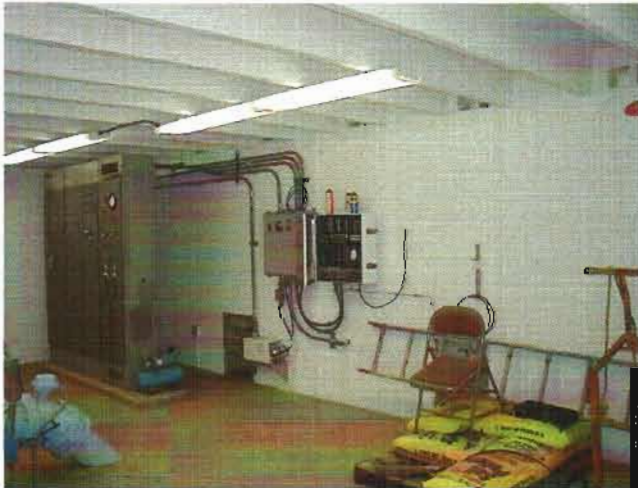
(561) 586-1671

24. BRIEF DESCRIPTION OF PROJECT AND RELEVANCE TO THIS CONTRACT *(Include scope, size, and cost)*

Two (2) new standby power generators and remote telemetry units (RTU's) were designed, one (1) at each of the two (2) existing north and south water booster stations in the City of Lake Worth. Each generator consists of a self-contained skid-mounted, diesel fuel tank below the generator enclosed with a weatherproof, sound-attenuating enclosure.

A new electrical service was designed at each pump station, including a new automatic transfer switch, to provide both normal and emergency power to the existing water booster pumps. Motorola MOSCAD telemetry systems were specified to provide control and status reporting to the existing central station.

**Total Project Cost = \$250,000**



**25. FIRMS FROM SECTION C INVOLVED WITH THIS PROJECT**

	(1) FIRM NAME	(2) FIRM LOCATION <i>(City and State)</i>	(3) ROLE
a.	Smith Engineering Consultants, Inc.	West Palm Beach, Florida	Electrical Engineering
b.	(1) FIRM NAME	(2) FIRM LOCATION <i>(City and State)</i>	(3) ROLE





**F. EXAMPLE PROJECTS WHICH BEST ILLUSTRATE PROPOSED TEAM'S QUALIFICATIONS FOR THIS CONTRACT**

*(Present as many projects as requested by the agency, or 10 projects, if not specified. Complete one Section F for each project.)*

20. EXAMPLE PROJECT KEY NUMBER

6

21. TITLE AND LOCATION *(City and State)*

Village of Royal Palm Beach R.O. Plant Expansion

22. YEAR COMPLETED

PROFESSIONAL SERVICES

CONSTRUCTION (if Applicable)

2005

2006

**23. PROJECT OWNER'S INFORMATION**

a. PROJECT OWNER

Village of Royal Palm Beach

b. POINT OF CONTACT NAME

Ray Liggins, P.E.

c. POINT OF CONTACT TELEPHONE NUMBER

(561) 790-5165

24. BRIEF DESCRIPTION OF PROJECT AND RELEVANCE TO THIS CONTRACT *(Include scope, size, and cost)*

A new reverse osmosis system was added to the existing water treatment plant significantly increasing its capacity. New variable frequency drives (VFD's) were installed to serve the new high pressure pump and the existing transfer pump. The new VFD's were installed within the existing main electrical room and fed from the existing motor control centers.

A new odor control system was installed complete with blowers, recirculation pumps, and chemical feed pumps. The existing clearwell transfer pumps were replaced with larger motors requiring upgraded motor controls and wiring. Additional instrumentation was installed throughout the site with new programmable logic controllers (PLC's) provided for the main process equipment. These were all successfully integrated within the existing plant supervisory control and data acquisition (SCADA) system.

**Total Project Cost = \$950,000**



**25. FIRMS FROM SECTION C INVOLVED WITH THIS PROJECT**

	(1) FIRM NAME	(2) FIRM LOCATION <i>(City and State)</i>	(3) ROLE
a.	Smith Engineering Consultants, Inc.	West Palm Beach, Florida	Electrical Engineering
b.	(1) FIRM NAME	(2) FIRM LOCATION <i>(City and State)</i>	(3) ROLE



**F. EXAMPLE PROJECTS WHICH BEST ILLUSTRATE PROPOSED TEAM'S QUALIFICATIONS FOR THIS CONTRACT**  
*(Present as many projects as requested by the agency, or 10 projects, if not specified. Complete one Section F for each project.)*

20. EXAMPLE PROJECT KEY NUMBER  
7

21. TITLE AND LOCATION (City and State) Village of Royal Palm Beach WWTP Expansion	22. YEAR COMPLETED	
	PROFESSIONAL SERVICES 2001	CONSTRUCTION (if Applicable) 2003

**23. PROJECT OWNER'S INFORMATION**

a. PROJECT OWNER Village of Royal Palm Beach	b. POINT OF CONTACT NAME Ray Liggins, P.E.	c. POINT OF CONTACT TELEPHONE NUMBER (561) 790-5165
---	---	--

24. BRIEF DESCRIPTION OF PROJECT AND RELEVANCE TO THIS CONTRACT *(include scope, size, and cost)*

A recent expansion to the existing wastewater treatment plant included the addition of a new dewatering building (including belt filter press and truck loading area), odor control system, site lift station, sodium hypochlorite structure, and effluent pump station modifications. New site lighting was installed throughout the project. A new 1,200A, 480V electrical service was designed to feed the entire plant including both existing and new electrical loads. Complex control, instrumentation, and SCADA systems were provided and integrated into a new plant control system.

Smith Engineering Consultants designed all of the electrical systems, including power, lighting, controls, instrumentation, and SCADA for an even more recent plant expansion. This expansion included the addition of a new pre-treatment (headworks) structure, equalization basin, aerobic digester, two (2) new clarifiers, and effluent pump station modifications. This expansion was never constructed because of Palm Beach County's acquisition of the Royal Palm Beach utilities.

**Total Project Cost = \$2,300,000**



**25. FIRMS FROM SECTION C INVOLVED WITH THIS PROJECT**

	(1) FIRM NAME	(2) FIRM LOCATION (City and State)	(3) ROLE
a.	Smith Engineering Consultants, Inc.	West Palm Beach, Florida	Electrical Engineering
b.	(1) FIRM NAME	(2) FIRM LOCATION (City and State)	(3) ROLE





**F. EXAMPLE PROJECTS WHICH BEST ILLUSTRATE PROPOSED TEAM'S QUALIFICATIONS FOR THIS CONTRACT**

*(Present as many projects as requested by the agency, or 10 projects, if not specified. Complete one Section F for each project.)*

20. EXAMPLE PROJECT KEY NUMBER

8

21. TITLE AND LOCATION (City and State) City of Lake Worth Water Treatment Plant Generator	22. YEAR COMPLETED	
	PROFESSIONAL SERVICES	CONSTRUCTION (if Applicable)
	2006	2007

**23. PROJECT OWNER'S INFORMATION**

a. PROJECT OWNER City of Lake Worth	b. POINT OF CONTACT NAME Mike Thew, P.E.	c. POINT OF CONTACT TELEPHONE NUMBER (561) 586-1671
--	---	--

24. BRIEF DESCRIPTION OF PROJECT AND RELEVANCE TO THIS CONTRACT *(include scope, size, and cost)*

A new electrical building was constructed to house the new main electrical service and standby power generator for the existing water treatment plant in Lake Worth. New high service pumps and motors were installed to replace the existing, aging pumps and motors. Two (2) new variable frequency drives (VFD's) and three (3) new solid-state, reduced voltage motor starters were installed within the existing motor control center to serve the pumps. Air conditioning was provided to cool the VFD's. Electrically operated valves for the high service pumps were successfully integrated into the motor control scheme. Operation of the VFD's was integrated into the existing plant SCADA system.

A 1,000 kW diesel generator was installed to provide backup power to the entire water treatment plant. A new 1,600A, 480V electrical service, including an automatic transfer switch, was designed for the plant. All of this equipment was housed within the new electrical building constructed on the site.

**Total Project Cost = \$1,300,000**



**25. FIRMS FROM SECTION C INVOLVED WITH THIS PROJECT**

	(1) FIRM NAME	(2) FIRM LOCATION (City and State)	(3) ROLE
a.	Smith Engineering Consultants, Inc.	West Palm Beach, Florida	Electrical and Mechanical Engineering
b.	(1) FIRM NAME	(2) FIRM LOCATION (City and State)	(3) ROLE





---

**H. ADDITIONAL INFORMATION**

---

30. PROVIDE ANY ADDITIONAL INFORMATION REQUESTED BY THE AGENCY. ATTACH ADDITIONAL SHEETS AS NEEDED.

Smith Engineering Consultants, Inc. is a multi-discipline engineering firm with an in-depth knowledge of energy, water, telecommunications, and architectural projects. At SEC, we approach our business just as you do, focusing on our customers and the various environments in which they operate.

SEC places a strong emphasis on creating productive working relationships with clients. Because we believe that teamwork is the key to success, our professionals are committed to responsive service, attention to detail, and effective communication and cooperation.

Our staff has built a deserved reputation for completing assignments in a cost-effective and timely manner. We've accomplished this through innovative thinking, careful planning, and professionals who believe in quality and hard work.

As Florida continues to experience tremendous growth, capital improvement projects will remain in the forefront of municipal infrastructure improvement efforts. The staff at Smith Engineering Consultants has played an important role in the design, construction, and renovation of facilities throughout the state. Our knowledge of facilities and agencies in Palm Beach, Martin, and St. Lucie Counties is particularly notable, due to our more than 30 years of experience here in south Florida.

Public facilities require complex electrical and mechanical systems, including HVAC, plumbing, power, lighting, controls, instrumentation, and telemetry. You can turn to SEC for expertise in the design of these elements.

Cost-effective design is the key to success for today's municipal infrastructure projects. Understanding that funding usually comes from a county or city's own tax base, our staff approach every design from a "Total Project" perspective. We will provide the most cost-effective and efficient design for the long term, always looking hard at the client's operation and maintenance costs.

---

**I. AUTHORIZED REPRESENTATIVE**

The foregoing is a statement of facts

31 SIGNATURE

32. DATE

33. NAME AND TITLE

Larry M. Smith, P.E./President

---



# ARCHITECT – ENGINEER QUALIFICATIONS

1. SOLICITATION NUMBER (if any)

## PART II – GENERAL QUALIFICATIONS

(If a firm has branch offices, complete for each specific branch office seeking work.)

2a. FIRM (OR BRANCH OFFICE) NAME <b>Smith Engineering Consultants, Inc.</b>		3. YEAR ESTABLISHED 1999	4. DUNS NUMBER
2b. STREET 2161 Palm Beach Lakes Blvd., Suite 312		5. OWNERSHIP	
2c. CITY West Palm Beach	2d. STATE FL	33409	
6a. POINT OF CONTACT NAME AND TITLE Larry M. Smith, P.E., President		a. TYPE Corporation	
6b. TELEPHONE NUMBER (561) 616-3911		6c. E-MAIL ADDRESS lsmithpe@aol.com	
8a. FORMER FIRM NAME(S) (if any)		8b. YR. ESTABLISHED	8c. DUNS NUMBER

b. SMALL BUSINESS STATUS  
City of WPB, Palm Beach County, SFWMD

7. NAME OF FIRM (if block 2a is a branch office)

### 9. EMPLOYEES BY DISCIPLINE

### 10. PROFILE OF FIRM'S EXPERIENCE AND ANNUAL AVERAGE REVENUE FOR LAST 5 YEARS

a. Function Code	b. Discipline	c. No. of Employees		a. Profile Code	b. Experience	c. Revenue Index Number (see below)
		(1) FIRM	(2) BRANCH			
02	Administrative	1		A05	Airports; Nav aids; Airport Lighting	1
08	CADD Technician	2		C18	Cost Estimating	1
21	Electrical Engineer	2		D03	Desalination	1
42	Mechanical Engineer	2		E03	Electrical Studies and Design	1
15	Construction Inspector	1		H04	Heating; Ventilating; Air Conditioning	1
				L06	Lighting (Exteriors; Streets; Memorials;	1
				P07	Plumbing & Piping Design	1
				P12	Power Generation, Transmission, Dist.	1
				S13	Storm Water Handling & Facilities	1
				A12	Automation; Controls; Instrumentation	1
				C04	Chemical Processing & Storage	1
				B02	Bridges	1
				C08	Codes; Standards; Ordinances	1
				C17	Corrosion Control; Cathodic Protection;	1
				D04	Design-Build – Preparation of Requests for	1
				F03	Fire Protection	1
				F05	Forensic Engineering	1
				S04	Sewage Collection, Treatment and Disposal	1
				S07	Solid Wastes; Incineration; Landfill	1
				H07	Highways; Streets; Airfield Paving; Parking	1
				W03	Water Supply; Treatment and Distribution	1
				R04	Recreation Facilities (Parks, Marinas, Etc.)	1
	Other Employees	0				
	<b>Total</b>	<b>8</b>				

11. ANNUAL AVERAGE PROFESSIONAL SERVICES REVENUES OF FIRM FOR LAST 3 YEARS  
(Insert revenue index number shown at right)

### PROFESSIONAL SERVICES REVENUE INDEX NUMBER

- |   |   |
|---|---|
| 1. Less than \$100,000                  | 6. \$2 million to less than \$5 million   |
| 2. \$100,000 to less than \$250,000     | 7. \$5 million to less than \$10 million  |
| 3. \$250,000 to less than \$500,000     | 8. \$10 million to less than \$25 million |
| 4. \$500,000 to less than \$1 million   | 9. \$25 million to less than \$50 million |
| 5. \$1 million to less than \$2 million | 10. \$50 million or greater               |

a. Federal Work	1
b. Non-Federal Work	4
c. Total Work	4

### 12. AUTHORIZED REPRESENTATIVE

The foregoing is a statement of facts.

a. SIGNATURE	b. DATE
c. NAME AND TITLE Larry M. Smith, P.E./President	



## **SEC References (Public)**

Ms. Amy Harris, P.E.  
Palm Beach County  
Engineering & Public Works- Traffic Division  
160 Australian Avenue, Suite 303  
West Palm Beach, FL 33406  
(561) 684-4030  
Recent Projects:  
Donald Ross Road  
Seminole-Pratt Whitney Road  
Lyons Road  
Military Trail, Boca Raton

---

Mr. Brian Shields, P.E.  
Palm Beach County  
Water Utilities Department  
8100 Forest Hill Blvd.  
West Palm Beach, FL 33413  
(561) 493-6081  
Recent Projects:  
PBC LS 5243 Generator  
City of Pahokee Canal Point Lift Stations

---

Mr. Ken Rearden, P.E.  
City of West Palm Beach  
PO Box 3506  
West Palm Beach, FL 33402  
(561) 659-8085  
Recent Projects:  
Water Treatment Plant Generator  
Renaissance Stormwater Pump Station  
ECR WWTP Construction  
Flagler Drive Pump Station Improvements (PS #3, PS #5)  
Lift Station SCADA System

---

Mr. Jim Bowser, P.E.  
Town of Palm Beach  
951 Old Okeechobee Road, Suite A  
West Palm Beach, FL 33401  
(561) 838-5440  
Recent Projects:  
Clarendon Avenue Pump Station  
D16 & D18 Pump Station Generators  
D14 Pump Station Pump Addition  
D12 Pump Station Controls  
Wastewater Flow Meter Replacement

---

Mr. Mark Hammond  
PBC Solid Waste Authority  
7501 North Jog Road  
West Palm Beach, FL 33412  
(561) 640-4000

Recent Projects:  
Industrial Supply Wells  
Compost Facility Biofilters  
Compost Exhaust System Evaluation  
Groundwater Remediation Wells

---

Mr. Gary Clough  
Village of Wellington  
14000 Greenbriar Boulevard  
Wellington, FL 33414  
(561) 791-4003

Recent Projects:  
Stormwater Pump Stations 3 and 4  
12<sup>th</sup> Fairway Pump Station No. 5  
Stormwater Pump Station No. 6  
Public Works Complex Generator

---

Mr. Ray Liggins, P.E.  
Village of Royal Palm Beach  
1050 Royal Palm Beach Boulevard  
Royal Palm Beach, FL 33411  
(561) 790-5165

Recent Projects:  
WTP and Wells Generators  
R.O. Plant Expansion  
WWTP Expansion Construction  
Veteran's Park Power Distribution & Lighting  
Miscellaneous Ballfield Lighting  
Lift Station Generators

---

Mr. Michael Thew, P.E.  
City of Lake Worth  
1900 2<sup>nd</sup> Avenue North  
Lake Worth, FL 33461  
(561) 586-1671

Recent Projects:  
WTP Generator  
Regional Flowmeter SCADA  
Lift Station Improvements  
Wells Telemetry Additions  
Master and RePump Stations Rehabilitation

## **SEC References (Private)**

Mr. Tshaka E. Dennis, P.E.  
Mr. Mark Weber, P.E.  
Stanley Consultants, Inc.  
1601 Belvedere Road, Suite 400 East  
West Palm Beach, FL 33406  
(561) 689-7444

---

Mr. Phillip R. Dover, P.E., DFE  
Brown and Caldwell  
1475 CenterPark Blvd., Suite 210  
West Palm Beach, FL 33401  
(561) 684-3456

---

Mr. John E. Kennedy, P.E.  
Greenhorne & O'Mara  
3223 Commerce Place, Suite 100  
West Palm Beach, FL 33407  
(561) 686-7705

---

Mr. David F. Holtz, P.E., BCEE  
Holtz Consulting Engineers, Inc.  
50 South US Highway One, Suite 209  
Jupiter, FL 33477  
(561) 575-2005

---

Mr. Joel Wantman, P.E.  
Mr. David K. Brobst, P.E.  
Wantman Group, Inc.  
2035 Vista Parkway, Suite 100  
West Palm Beach, FL 33411  
(561) 687-2220

---

Mr. Albert E. Rosc, P.E.  
Mr. Gregory A. Prytyka, P.E., PTOE  
A & B Engineering, Inc.  
3461 Fairlane Farms Road  
Wellington, FL 33414  
(561) 383-7480

---



Mr. Kevin C. Lco, P.E., BCEE  
Camp Dresser & McKee, Inc.  
1601 Belvedere Road, Suite 211 South  
West Palm Beach, FL 33406  
(561) 689-3336

---

Mr. Eric Grotke, P.E.  
Mr. Kevin N. Vann, P.E.  
Camp Dresser & McKee, Inc.  
1701 Highway A-1-A, Suite 301  
Vero Beach, FL 32963  
(772) 231-4301

---

Ms. Angelina G. Fairchild, P.E.  
Mr. David W. Stewart, P.E.  
Kimley-Horn and Associates, Inc.  
4431 Embarcadero Drive  
West Palm Beach, FL 33407  
(561) 845-0665

---

Mr. Mark D. Miller, P.E.  
Kimley-Horn and Associates, Inc.  
10521 SW Village Center Drive  
Port St. Lucie, FL 34987  
(772) 345-3825

---

Mr. John R. Leemon, P.E.  
Mock, Roos & Associates, Inc.  
5720 Corporate Way  
West Palm Beach, FL 33407  
(561) 683-3113

---

Mr. James Burphy, P.E.  
R.C.T. Engineering, Inc.  
701 Northpoint Parkway, Suite 205  
West Palm Beach, FL 33407  
(561) 684-7534

---

Mr. Robert G. Cooper  
URS Corporation  
7800 Congress Avenue, Suite 200  
Boca Raton, FL 33487  
(561) 994-6500

---

Ms. Dana I. Gillette, P.E., PSM  
Erdman Anthony  
1402 Royal Palm Beach Blvd., Bldg. 500  
Royal Palm Beach, FL 33411  
(561) 753-9723

---

Mr. Keith B. Jackson, P.E.  
Engenuity Group Inc.  
1201 Belvedere Road  
West Palm Beach, FL 33405  
(561) 655-1151

---

Ms. Karen D. Brandon, P.E.  
Boyle Engineering, Inc.  
2090 Palm Beach Lakes Blvd., Suite 600  
West Palm Beach, FL 33409  
(561) 684-3375

---

Mr. C. Scott Thourot, P.E.  
WCI Communities, Inc.  
11631 Kew Gardens Avenue  
Palm Beach Gardens, FL 33410  
(561) 630-4266

---

Mr. Jeffrey G. Hiscock, P.E.  
JGH Engineering  
4003 Willow Run  
Palm Beach Gardens, FL 33418  
(561) 776-0276

---

Mr. Peter W. Aquart, P.E.  
Craven Thompson & Associates, Inc.  
2047 Vista Parkway, Suite 200  
West Palm Beach, FL 33411-2719  
(561) 688-5010

---

Mr. Donald Chalaire, P.E.  
Chalaire and Associates, Inc.  
4362 Northlake Blvd., Suite 206  
Palm Beach Gardens, FL 33410  
(561) 694-0336

---

Mr. Carlos Alcantara, P.E.  
Mr. Bruce Reed, R.L.A., ASLA  
Keith & Schnars, P.A.  
6500 North Andrews Avenue  
Ft. Lauderdale, FL 33309-2132  
(954) 776-1616



# *State of Florida*

## *Department of State*

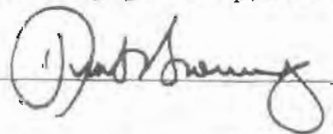
I certify from the records of this office that SMITH ENGINEERING CONSULTANTS, INC. is a corporation organized under the laws of the State of Florida, filed on June 3, 1999, effective June 1, 1999.

The document number of this corporation is P99000049883.

I further certify that said corporation has paid all fees due this office through December 31, 2010, that its most recent annual report was filed on January 26, 2010, and its status is active.

I further certify that said corporation has not filed Articles of Dissolution.

*Given under my hand and the Great Seal of Florida, at Tallahassee, the Capital, this the Twenty Sixth day of January, 2010*



*Secretary of State*



Authentication ID: 000167225060-012610-P99000049883

To authenticate this certificate, visit the following site, enter this ID, and then follow the instructions displayed

<https://efile.sunbiz.org/certauthver.html>



STATE OF FLORIDA  
BOARD OF PROFESSIONAL ENGINEERS  
2607 CALLAWAY RD STE 200  
TALLAHASSEE, FL 32303-5268

Smith Engineering Consultants, Inc.  
2151 PALM BEACH LAKES BOULEVARD  
SUITE 312  
WEST PALM BEACH, FL 33409

DETACH HERE

# State of Florida

## Board of Professional Engineers

### Smith Engineering Consultants, Inc.

Is authorized under the provisions of Section 471.023, Florida Statutes, to offer engineering services to the public through a Professional Engineer, duly licensed under Chapter 471, Florida Statutes.

**Expiration:** 28-Feb-11      **Certificate of Authorization**      **CA No:** 8228

**Audit No:** 22820111838      **DISPLAY AS REQUIRED BY LAW**



# Anne M. Gannon, Tax Collector

P.O. Box 3715

West Palm Beach, FL 33402-3715

WWW.TAXCOLLECTORPBC.COM Tel:(561) 355-2272

SMITH ENGINEERING CONSULTANTS  
SMITH ENGINEERING CONSULTANTS  
INC  
2161 PALM BEACH LAKES BLV#S312  
WEST PALM BEACH FL 33409-6607

Account Number: **2007-01768**

Dear Business Owner:

This is your new local business tax receipt. Please keep the upper portion for your records and detach the bottom of this form. Verify the information and display it conspicuously at your place of business, open to the view of the public.

This receipt is in addition to and not in lieu of any license required by law or municipal ordinance and is subject to regulations of zoning, health, and any other lawful authority (County Ordinance Number 72-7).

Receipts may be transferred to a new **owner** when evidence of a sale is provided; the original receipt is surrendered and a transfer fee is paid.

Receipts may be transferred to a new **location** when proof of zoning approval is provided; the original receipt is surrendered and a transfer fee is paid.

Business name changes require a new receipt.

This receipt **expires on September 30, 2011**. Renewal notices are mailed at the end of June. If you do not receive the notice by the end of July, please let us know.

I hope you have a successful year.

Tax Collector

\*\*\*\* DETACH AND DISPLAY BOTTOM PORTION, AND KEEP UPPER PORTION FOR YOUR RECORDS \*\*\*\*

**2007-01768**

STATE OF FLORIDA

DS-012

PALM BEACH COUNTY

CLASSIFICATION

## LOCAL BUSINESS TAX RECEIPT

**EXPIRES: SEPTEMBER - 30 - 2011**

SMITH ENGINEERING CONSULTANTS  
INC  
SMITH ENGINEERING CONSULTANTS  
INC

LOCATED AT

CNTY

33.00

2161 PALM BEACH LAKES BLV#S312  
WEST PALM BEACH FL 33409

TOTAL

33.00

This receipt is hereby valid for the above address for the period beginning on the first day of October and ending on the thirtieth day of September to engage in the business, profession or occupation of:

ENGINEER BUSINESS

8228

**THIS IS NOT A BILL - DO NOT PAY**

PAID. PBC TAX COLLECTOR

33.00 BTR 049 01703138 08/23/2010

ANNE M. GANNON  
TAX COLLECTOR, PALM BEACH COUNTY

THIS DOCUMENT IS VALID ONLY WHEN RECEIPTED  
BY TAX COLLECTOR





**Anne M. Gannon, Tax Collector**  
 P.O. Box 3715  
 West Palm Beach, FL 33402-3715  
 WWW.TAXCOLLECTORPBC.COM Tel:(561) 355-2272

SMITH ENGINEERING CONSULTANTS  
 SMITH LARRY  
 2161 PALM BEACH LAKES BLV#S312  
 WEST PALM BEACH FL 33409-6607

Account Number: **2007-01767**

Dear Business Owner:

This is your new local business tax receipt. Please keep the upper portion for your records and detach the bottom of this form. Verify the information and display it conspicuously at your place of business, open to the view of the public.

This receipt is in addition to and not in lieu of any license required by law or municipal ordinance and is subject to regulations of zoning, health, and any other lawful authority (County Ordinance Number 72-7).

Receipts may be transferred to a new **owner** when evidence of a sale is provided; the original receipt is surrendered and a transfer fee is paid.

Receipts may be transferred to a new **location** when proof of zoning approval is provided; the original receipt is surrendered and a transfer fee is paid.

Business name changes require a new receipt.

This receipt **expires on September 30, 2011**. Renewal notices are mailed at the end of June. If you do not receive the notice by the end of July, please let us know.

I hope you have a successful year.

*Anne M. Gannon*

Tax Collector

\*\*\*\* DETACH AND DISPLAY BOTTOM PORTION, AND KEEP UPPER PORTION FOR YOUR RECORDS \*\*\*\*

**2007-01767**

STATE OF FLORIDA  
 PALM BEACH COUNTY

OE-012

CLASSIFICATION

**LOCAL BUSINESS TAX RECEIPT**  
**EXPIRES: SEPTEMBER - 30 - 2011**

SMITH ENGINEERING CONSULTANTS  
 SMITH LARRY

LOCATED AT

CNTY

33.00

2161 PALM BEACH LAKES BLV#S312  
 WEST PALM BEACH FL 33409

TOTAL

33.00

This receipt is hereby valid for the above address for the period beginning on the first day of October and ending on the thirtieth day of September to engage in the business, profession or occupation of:

ENGINEER

PE0045997

**THIS IS NOT A BILL - DO NOT PAY**

PAID. PBC TAX COLLECTOR  
 33.00 BTR 049 01705018 08/24/2010

ANNE M. GANNON  
 TAX COLLECTOR, PALM BEACH COUNTY

THIS DOCUMENT IS VALID ONLY WHEN RECEIPTED  
 BY TAX COLLECTOR



Dear Business Owner,

This is your Local Business Tax Receipt / Certificate of Use for the 2010 to 2011 business year. I appreciate your participation in the continued growth of the City of West Palm Beach. If we can be of assistance, please do not hesitate to contact us by telephone or fax at the numbers shown below. Please read the instructions carefully regarding the posting of this Business Tax Receipt / Certificate of Use. Furthermore, please be advised that, pursuant to Section 22-39 of the City's Code of Ordinances, a Certificate of Use may be suspended or revoked upon certain violations of City, County or State law.

Sincerely,

*Doug Wise, CBO*  
BUILDING OFFICIAL

FOR INFORMATION CALL (561) 805-6700 OR FAX (561) 805-6676 / HOURS 8:00 AM - 5:00 PM — MONDAY - FRIDAY

INSTRUCTIONS: PLEASE DETACH BELOW ▼ AND POST IN A CONSPICUOUS PLACE AT YOUR PLACE OF BUSINESS.



**CITY OF WEST PALM BEACH**

2010 to 2011 LOCAL BUSINESS TAX RECEIPT / CERTIFICATE OF USE

NOT TRANSFERABLE

CITY OF WEST PALM BEACH  
BUSINESS TAX RECEIPT / CERTIFICATE OF USE

0000018209  
SMITH ENGINEER CONSULTANTS INC  
2161 PALM BEACH LAKES BLVD

ENGINEERING OFFICE  
LIC PE # 45997 EXP 2/28/07  
LARRY M SMITH ENG

BUS. TAX ID	CATEGORY	DESCRIPTION	FEE
41799	541330	ENGINEERING SERVICES OFFICE	86.81
41800	541331	ENGINEER	173.64
CHANGES		PENALTIES	0.00
TOTAL			260.45
THIS DOCUMENT NOT VALID UNTIL FUNDS ARE COLLECTED			** PAID
			260.45 ** BAL **
			0.00

EXPIRES  
SEPTEMBER 30,  
**2011**



**Department of Engineering  
and Public Works**

PO Box 21229

West Palm Beach, FL 33416-1229

(561) 684-4000

www.pbcgov.com

**Palm Beach County  
Board of County  
Commissioners**

Addie I. Greene, Chairperson

Jeff Koons, Vice Chair

Karen T. Marcus

Robert J. Kanjian

Mary McCarry

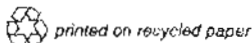
Burt Aaronson

Jess R. Santarnanna

**County Administrator**

Robert Weisman

*An Equal Opportunity  
Affirmative Action Employer*



July 29, 2008

Smith Engineering Consultants, Inc.  
Attn: Larry M. Smith, President  
2161 Palm Beach Lakes Blvd., Suite 312  
West Palm Beach, Florida 33409

**RE: Consultants Competitive Negotiation Act (CCNA) Certification**

Dear Mr. Smith,

Your certification was updated with Palm Beach County on July 29, 2008 and will remain active until conditions are altered to either increase or reduce the Consultants capabilities, and/or when requested by the Department.

You are required to report changes of address and any significant changes to your manpower, capabilities, or work category qualifications, and provide us with copies of license renewals (corporate/professional).

Should you have any questions please contact me at (561) 684-4149.

Sincerely,

David L. Young, P.E.  
Special Projects Manager

DLY:jch

Enclosure

Certification File – Consultant No. 707  
Reading File



NOTICE OF PROFESSIONAL CONSULTANT CERTIFICATION

In accordance with established procedures, the Deputy County Engineer on October 29, 2004 certified that you are qualified to provide consulting services to Palm Beach County in the categories of work checked below. Notice of certification is NOT notice of selection.

Consultant Name: Smith Engineering Consultants, Inc

Address: 5114 Okeechobee Blvd., Suite 104  
West Palm Beach, FL 33417

Phone Number: (561) 616-3911

Fax Number: (561) 616-3912

M/WBE Category: \_\_\_\_\_

1. TRANSPORTATION PLANNING

- 01 URBAN AREA & REGIONAL TRANSPORTATION PLANNING [ ]
- 02 AVIATION SYSTEMS PLANNING [ ]
- 03 AIRPORT MASTER PLANNING [ ]
- 04 WATERWAYS & PORTS PLANNING [ ]
- 05 MASS & RAPID TRANSIT PLANNING [ ]
- 06 ALTERNATE SYSTEMS & CORRIDOR LOCATION PLANNING [ ]
- 07 ENVIRONMENTAL STUDIES [ ]
- 08 ATTITUDE, OPINION & COMMUNITY VALUE STUDIES [ ]

4. HIGHWAY DESIGN BRIDGES

- 01 MINOR BRIDGES DESIGN [ ]
- 02 MAJOR BRIDGES DESIGN [ ]
- 03 MOVABLE SPAN BRIDGE DESIGN [ ]

5. TOPOGRAPHY

- 01 LAND SURVEYING [ ]
- 02 ENGINEERING SURVEYING [ ]
- 03 GEODETIC SURVEYING [ ]
- 04 AERIAL PHOTOGRAPHY [ ]
- 05 AERIAL PHOTOGRAMMETRY [ ]
- 06 REMOTE SENSING [ ]
- 07 CARTOGRAPHY [ ]

2. MASS TRANSIT OPERATION

- 01 EXPERIMENTAL SYSTEMS RESEARCH AND DEVELOPMENT [ ]
- 02 AIRPORT DESIGN AND OPERATION [ ]
- 03 PORT & WATERWAY DESIGN & OPERATION [ ]
- 04 MASS & RAPID TRANSIT DESIGN AND OPERATION [ ]

6. SOILS AND FOUNDATION

- 01 GEOLOGICAL & GEOPHYSICAL STUDIES [ ]
- 02 BRIDGE FOUNDATION STUDIES [ ]
- 03 PILE FOUNDATION STUDIES [ ]
- 04 HYDRAULIC & HYDROLOGIC STUDIES [ ]
- 05 SOIL TREATMENT [ ]
- 06 MATERIALS TESTING [ ]

3. HIGHWAY DESIGN ROADWAY

- 01 TWO LANE OR MULTI-LANE RURAL GENERAL FREE ACCESS HIGHWAYS DESIGN [ ]
- 02 TWO LANE OR MULTI-LANE WITH CURB & GUTTER GENERALLY FREE ACCESS HIGHWAYS DESIGN INCLUDING STORM SEWERS [ ]
- 03 MULTI-LANE RURAL LIMITED ACCESS EXPRESSWAY TYPE HIGHWAY DESIGN [ ]
- 04 PRE-DESIGN ENGINEERING STUDIES AND DESIGN OF URBAN EXPRESSWAY AND URBAN INTERSTATE [ ]
- 05 TRAFFIC OPERATION STUDIES [ ]
- 06 TRAFFIC OPERATION DESIGN [ ]
- 07 TRAFFIC CONTROL SYSTEMS ANALYSIS, DESIGN AND IMPLEMENTATION [ ]

7. ARCHITECTURAL

THE FOLLOWING CATEGORIES ARE BASED ON THE FLORIDA ASSOCIATION OF THE AMERICAN INSTITUTE OF ARCHITECTS RECOMMENDED FEE SCHEDULE

- 01 GROUP A [ ]
- 02 GROUP B [ ]
- 03 GROUP C [ ]
- 04 GROUP D [ ]
- 05 GROUP E [ ]
- 06 LANDSCAPE ARCHITECTURE [ ]
- 07 THRESHOLD INSPECTION [ ]

\* ADDITIONS  
\*\* DELETIONS

FIRM: Smith Engineering Consultants, Inc.

8 MECHANICAL ENGINEERING:

- 01 WASTE WATER TREATMENT SYSTEMS..... [ ]
- 02 WASTE WATER COLLECTION SYSTEMS..... [ ]
- 03 WATER SUPPLY TREATMENT SYSTEMS..... [ ]
- 04 WATER DISTRIBUTION SYSTEMS..... [ ]
- 05 HEATING SYSTEMS..... [X]
- 06 COOLING SYSTEMS..... [X]
- 07 SPECIALIZED DESIGN..... [X]  
(Plumbing, Industrial Piping)

10 STRUCTURAL ENGINEERING

- 01 INSTITUTIONAL..... [ ]
- 02 RECREATIONAL..... [ ]
- 03 INDUSTRIAL..... [ ]
- 04 RESIDENTIAL..... [ ]

9 ELECTRICAL ENGINEERING:

- 01 INSTITUTIONAL FACILITIES..... [X]
- 02 RECREATIONAL FACILITIES..... [X]
- 03 INDUSTRIAL FACILITIES..... [X]
- 04 RESIDENTIAL FACILITIES..... [X]
- 05 HIGHWAY LIGHTING..... [X]

11 OCEANOGRAPHY:

- 01 OFFSHORE SAND STUDIES..... [ ]
- 02 BEACH RESTORATION..... [ ]
- 03 UNDERWATER INVESTIGATION..... [ ]

12 ENVIRONMENTAL ENGINEERING:

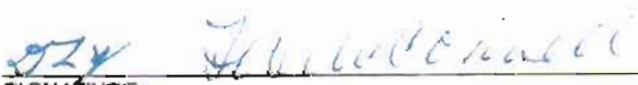
- 01 AIR QUALITY INVESTIGATION & AIR POLLUTION CONTROL..... [ ]
- 02 ENVIRONMENTAL AUDIT/SITE INVESTIGATION..... [ ]
- 03 SOIL AND GROUNDWATER CONTAMINATION ASSESSMENT AND REMEDIATION SYSTEM DESIGN..... [ ]
- 04 SOLID/HAZARDOUS WASTE MANAGEMENT..... [ ]
- 05 INDUSTRIAL WASTE MANAGEMENT..... [ ]
- 06 WATER RESOURCE EVALUATION AND DEVELOPMENT..... [ ]
- 07 WATER & WASTEWATER TREATMENT PROCESS DESIGN..... [ ]

13 OTHER:

PLEASE SPECIFY AREA(S) OF EXPERTISE..... [ ]

\* = ADDITIONS  
\*\* = DELETIONS

 SIGNATURE: CONSULTANT      President TITLE      10/26/04 DATE

 SIGNATURE: Tanya N. McConnell, P.E., Deputy Consultant: Engineer      10/29/04 DATE



**CERTIFICATE OF QUALIFICATIONS**  
**Consultants Competitive Negotiation Act**  
**(CCNA)**

This certificate is awarded to

**Smith Engineering Consultants, Inc.**

114 – Control Systems  
116 – Electrical Systems

115 – Mechanical Systems

**City of West Palm Beach**

*Donna Levegood*  
Donna Levegood, CPPO  
Assistant Purchasing Manager

May 12, 2012  
Expiration Date



PQ Certificate No.:	2009-650924279-06
Approval Date:	4/14/2010
Expiration Date:	4/30/2011

Miami-Dade County, Florida  
Department of Procurement Management (DPM)

## ARCHITECTURE/ENGINEERING (A/E) PRE-QUALIFICATION CERTIFICATE

*This certificate is hereby issued to:* Smith Engineering Consultants, Inc.  
2161 Palm Beach Lakes Blvd., Suite 312  
West Palm Beach, FL 33409

The above named applicant is pre-qualified to provide professional A/E services for Miami-Dade County for the period indicated above. The applicant has committed its firm to comply with the specific conditions listed below.

1. Pre-Qualified to offer professional services only in the Miami-Dade County technical categories shown in the attached "Statement of Technical Qualifications." All technical category restrictions must be strictly adhered to.
2. Pre-Qualification Certification (PQC) consolidates the technical certification, affirmative action plan, and vendor registration into one streamlined certification process resulting in the issuance of a Pre-Qualification Certificate.
3. Report any significant changes, such as contact person, qualifier, ownership, firm address, etc., to DPM's Professional Services Certification located at 111 NW 1<sup>st</sup> Street, Suite 1300, Miami, FL 33128, within 30 days of such a change. Failure to report said changes to the County may result in the immediate suspension or termination of your firm's Pre-Qualification Certification.
4. Firms are responsible for observing and adhering to Miami-Dade County's Administrative Order 3-39 "Standard process for construction of capital improvements, acquisition of professional services, construction contracting, change orders and reporting"
5. Failure to renew your firm's PQC at least thirty (30) days prior to your firm's current expiration date may result in the suspension and/or termination from County programs and current or future contracts until your firm's Pre-Qualification Certification has been properly renewed. Any lapses in the certification of any of the required PQC areas (vendor registration, affirmative action plan, or technical certification) will result in a lapse in your PQC. Firms are responsible for observing and adhering to all submission deadlines.
6. Any renewal applications and/or supporting documents submitted after the application deadline might delay the review of your firm's PQC certification to the next available Technical Certification Committee meeting. The PQC application, submission deadlines, and the Technical Certification Committee meeting calendar can be found on DPM's web site located at: <http://www.miamidade.gov/dpm/pqc.asp>
7. Permit Miami-Dade County representatives to have access during normal business hours to audit books and records to verify information submitted with this application. This right of access shall commence on the approval date of this certificate and shall terminate on its expiration date.

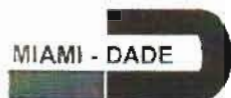
Please note that if at any time Miami-Dade County has reason to believe that any person or firm has willfully and knowingly provided incorrect information or made false statements, the County may refer the matter to the State Attorney's Office and/or other investigative agencies, initiate debarment procedures, and/or pursue sanctions or other legal remedies in accordance with Miami-Dade County policy and/or applicable federal, state and local laws.

If you have any questions regarding this certificate, please contact the PQC Unit at (305) 375-4784 or (305) 375-5637.



A handwritten signature in black ink, appearing to read "Nubia R. Jarquin", written over a horizontal line.

Nubia R. Jarquin  
Professional Services Certification



*Miami-Dade County  
Office of Capital Improvements*

*Statement of Technical Certification Categories*

Firm: SMITH ENGINEERING CONSULTANTS, INC.  
2161 Palm Beach Lakes Blvd., Suite 312  
West Palm Beach, FL 33409

<u>CATEGORY NO:</u>	<u>CATEGORY DESCRIPTION</u>	<u>APPROVAL DATE</u>	<u>EXPIRATION DATE</u>
12.00	GENERAL MECHANICAL ENGINEERING	4/22/2009	4/30/2011
13.00	GENERAL ELECTRICAL ENGINEERING	4/22/2009	4/30/2011

Luisa M. Millan, R. A., Chairperson  
Chief, Professional Services Division  
Office of Capital Improvements



## Florida Department of Transportation

CHARLIE CRIST  
GOVERNOR

605 Suwannee Street  
Tallahassee, FL 32399-0450

STEPHANIE C. KOPELOUSOS  
SECRETARY

August 16, 2010

Larry M. Smith, President  
SMITH ENGINEERING CONSULTANTS, INC.  
2161 Palm Beach Lakes Blvd., Suite 312  
West Palm Beach, Florida 33409

Dear Mr. Smith:

The Florida Department of Transportation has reviewed your application for qualification package and determined that the data submitted is adequate to qualify your firm for the following types of work:

- Group 7 - Traffic Operations Design
  - 7.2 - Lighting
  - 7.3 - Signalization

Your firm is now qualified to do work for the Department for minor projects only. This level of qualification allows consultants to compete for minor projects with fees estimated at below \$250,000.00.

Your Notice of Qualification shall be valid for one year from the date of this letter. We will automatically notify your firm 45 to 60 days prior to your update deadline.

Should you have any questions, please feel free to contact me at 850/414-4485.

Sincerely,

Lorraine E. Odom  
Professional Services  
Qualification Administrator

LEO/smr



**PALM BEACH COUNTY**  
**OFFICE OF SMALL BUSINESS ASSISTANCE**

CERTIFIES THAT  
**SMITH ENGINEERING CONSULTANTS, INC.**

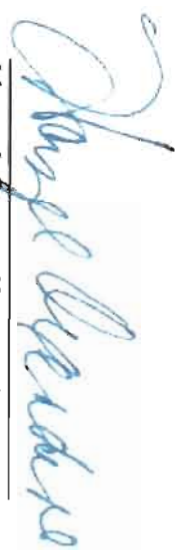
VENDOR # **SMIT0174**

is a *Small Business Enterprise as prescribed by Section 2-80.21 – 2-80.35 of the Palm Beach County Code for a three year period from October 21, 2009 to October 20, 2012.*

The following Services and/or Products are covered under this certification:

- Electrical Engineering Services
- Engineer Services, Professional
- Engineering Consulting Services
- Mechanical Engineering Services

Palm Beach County Board of County Commissioners



**Hazel Oxendine, Director**

October 21, 2009



- Jeff Koons, Chairman
- Burt Aaronson, Vice Chairman
- Karen T. Marcus
- Shelley Vana
- Steven L. Abrams
- Jess F. Santanaria
- Priscilla Taylor
- County Administrator
- Robert Weisman
- Deputy County Administrator
- Verdenia C. Baker

# SMALL BUSINESS CERTIFICATION

The City of West Palm Beach's Small Business Program

Certifies that

**SMITH ENGINEERING CONSULTANTS, INC.**

Has met the necessary requirements for certification as a Small Business under the Small Business Program as prescribed by the City of West Palm Beach's Ordinance Number 3366-00.

The following List of Services and/or Product are covered under this certification:

\*\*\*\*\*

- Engineering Services, Professional
- Mechanical Services
- Control Systems Engineering
- Electrical Services

\*\*\*\*\*

Issued by the City of West Palm Beach on March 30, 2010 and expires on April 30, 2013

Certificate Number: 9301507



Donna Levengood, CPPD  
Assistant Purchasing Manager





# SOUTH FLORIDA WATER MANAGEMENT DISTRICT

REGISTERED VENDOR NO. 111856

December 8, 2009

Mr. Larry Smith, President  
Smith Engineering Consultants, Inc.  
2161 Palm Beach Lakes Blvd., S-312  
West Palm Beach, FL 33409

---

CERTIFICATION EXPIRATION DATE  
December 8, 2012

---

Dear Mr. Smith:

The South Florida Water Management District (District) has certified your firm as a Small Business Enterprise (SBE). This certification is valid for three (3) years and may **only** be applied when business is conducted in the following area(s):

### Professional Engineering Services

*Your submittal of bids or proposals to supply other products or services outside of this specialty(s) will not count toward SBE participation. If you require certification in other areas of specialty, please contact the Procurement Department, SBE Section, for additional information*

Renewal is required every three (3) years and should be requested within 45 days prior to the above expiration date.

If any changes occur within your company during the certification period (such as ownership, affiliate company status, address, telephone number, licensing status, gross revenue, or any information that relates to your SBE Certification status), you must notify this office in writing immediately. It is imperative that we maintain current information on your company at all times. **FAILURE TO REPORT CHANGES MAY RESULT IN DECERTIFICATION.**

Certification is not a guarantee that your firm will receive work, nor an assurance that your firm will remain in the District's solicitation database. Upon requesting or downloading a bid or proposal package your firm must respond by submitting a bid or proposal or submit a *Statement of No Response* form. This is very important, for failure to respond to three (3) solicitations will result in your company being removed from the District's solicitation database.

Sincerely,

A handwritten signature in blue ink that reads "Sandra Hammerstein".

Sandra Hammerstein  
Sr. Compliance Specialist  
Procurement Department

SH/jcs



# ACORD™ CERTIFICATE OF LIABILITY INSURANCE

DATE (MM/DD/YYYY)  
06/02/2010

PRODUCER (305)822-7800 FAX 305-362-2443  
Collinsworth, Alter, Fowler, Dowling & French  
P. O. Box 9315  
Miami Lakes, FL 33014-9315  
Zoraida Gonzalez Ext 159 zgonzalez@cafd.com

THIS CERTIFICATE IS ISSUED AS A MATTER OF INFORMATION ONLY AND CONFERS NO RIGHTS UPON THE CERTIFICATE HOLDER. THIS CERTIFICATE DOES NOT AMEND, EXTEND OR ALTER THE COVERAGE AFFORDED BY THE POLICIES BELOW.

INSURED Smith Engineering Consultants, Inc.  
2161 Palm Beach Lakes Blvd., Suite 312  
West Palm Beach, FL 33409

**INSURERS AFFORDING COVERAGE**

NAIC #

INSURER A: Lloyds of London A XV  
INSURER B:  
INSURER C:  
INSURER D:  
INSURER E:

**COVERAGES**

THE POLICIES OF INSURANCE LISTED BELOW HAVE BEEN ISSUED TO THE INSURED NAMED ABOVE FOR THE POLICY PERIOD INDICATED. NOTWITHSTANDING ANY REQUIREMENT, TERM OR CONDITION OF ANY CONTRACT OR OTHER DOCUMENT WITH RESPECT TO WHICH THIS CERTIFICATE MAY BE ISSUED OR MAY PERTAIN, THE INSURANCE AFFORDED BY THE POLICIES DESCRIBED HEREIN IS SUBJECT TO ALL THE TERMS, EXCLUSIONS AND CONDITIONS OF SUCH POLICIES. AGGREGATE LIMITS SHOWN MAY HAVE BEEN REDUCED BY PAID CLAIMS.

INSR ADD'L LTR	TYPE OF INSURANCE	POLICY NUMBER	POLICY EFFECTIVE DATE (MM/DD/YY)	POLICY EXPIRATION DATE (MM/DD/YY)	LIMITS
	<b>GENERAL LIABILITY</b> <input type="checkbox"/> COMMERCIAL GENERAL LIABILITY <input type="checkbox"/> CLAIMS MADE <input type="checkbox"/> OCCUR  GEN'L AGGREGATE LIMIT APPLIES PER: <input type="checkbox"/> POLICY <input type="checkbox"/> PRO-JECT <input type="checkbox"/> LOC				EACH OCCURRENCE \$ DAMAGE TO RENTED PREMISES (Ea occurrence) \$ MFD EXP (Any one person) \$ PERSONAL & ADV INJURY \$ GENERAL AGGREGATE \$ PRODUCTS - COMP/OP AGG \$
	<b>AUTOMOBILE LIABILITY</b> <input type="checkbox"/> ANY AUTO <input type="checkbox"/> ALL OWNED AUTOS <input type="checkbox"/> SCHEDULED AUTOS <input type="checkbox"/> HIRED AUTOS <input type="checkbox"/> NON-OWNED AUTOS				COMBINED SINGLE LIMIT (Ea accident) \$ BODILY INJURY (Per person) \$ BODILY INJURY (Per accident) \$ PROPERTY DAMAGE (Per accident) \$
	<b>GARAGE LIABILITY</b> <input type="checkbox"/> ANY AUTO				AUTO ONLY - EA ACCIDENT \$ OTHER THAN EA ACC \$ AUTO ONLY AGG \$
	<b>EXCESS/UMBRELLA LIABILITY</b> <input type="checkbox"/> OCCUR <input type="checkbox"/> CLAIMS MADE  DEDUCTIBLE RETENTION \$				EACH OCCURRENCE \$ AGGREGATE \$ \$ \$ \$
	<b>WORKERS COMPENSATION AND EMPLOYERS' LIABILITY</b> ANY PROPRIETOR/PARTNER/EXECUTIVE OFFICER/MEMBER EXCLUDED? If yes, describe under SPECIAL PROVISIONS below				<input type="checkbox"/> WC STATU-TORY LIMITS <input type="checkbox"/> OTH-ER E.L. EACH ACCIDENT \$ E.L. DISEASE - EA EMPLOYEE \$ E.L. DISEASE - POLICY LIMIT \$
A	<b>OTHER</b> <b>Professional Liability</b> <b>Claims-Made Form</b> <b>Retro:6/1/99</b>	LDUSA1000472	06/01/2010	06/01/2011	\$1,000,000 Each Claim \$1,000,000 Annual Aggregate \$15,000 Deductible Each Claim

DESCRIPTION OF OPERATIONS / LOCATIONS / VEHICLES / EXCLUSIONS ADDED BY ENDORSEMENT / SPECIAL PROVISIONS

**CERTIFICATE HOLDER**

**CANCELLATION**

SHOULD ANY OF THE ABOVE DESCRIBED POLICIES BE CANCELLED BEFORE THE EXPIRATION DATE THEREOF, THE ISSUING INSURER WILL ENDEAVOR TO MAIL 30 DAYS WRITTEN NOTICE TO THE CERTIFICATE HOLDER NAMED TO THE LEFT, BUT FAILURE TO MAIL SUCH NOTICE SHALL IMPOSE NO OBLIGATION OR LIABILITY OF ANY KIND UPON THE INSURER, ITS AGENTS OR REPRESENTATIVES.

AUTHORIZED REPRESENTATIVE

Meade Collinsworth/ZO

# ACORD CERTIFICATE OF LIABILITY INSURANCE

CSR SB  
SMITH-8

DATE (MM/DD/YYYY)  
09/11/09

**PRODUCER**  
  
**ACEC/MARSH**  
 701 Market St., Ste. 1100  
 St. Louis MO 63101  
 Phone: 800-338-1391 Fax: 888-621-3173

**INSURED**  
  
 Smith Engineering Consultants  
 2161 PALM BEACH LAKES BLVD 312  
 West Palm Beach FL 33409

THIS CERTIFICATE IS ISSUED AS A MATTER OF INFORMATION ONLY AND CONFERS NO RIGHTS UPON THE CERTIFICATE HOLDER. THIS CERTIFICATE DOES NOT AMEND, EXTEND OR ALTER THE COVERAGE AFFORDED BY THE POLICIES BELOW.

INSURERS AFFORDING COVERAGE		NAIC #
INSURER A	Hartford Insurance Company	22357
INSURER B		
INSURER C		
INSURER D		
INSURER E		

## COVERAGES

THE POLICIES OF INSURANCE LISTED BELOW HAVE BEEN ISSUED TO THE INSURED NAMED ABOVE FOR THE POLICY PERIOD INDICATED. NOTWITHSTANDING ANY REQUIREMENT, TERM OR CONDITION OF ANY CONTRACT OR OTHER DOCUMENT WITH RESPECT TO WHICH THIS CERTIFICATE MAY BE ISSUED OR MAY PERTAIN, THE INSURANCE AFFORDED BY THE POLICIES DESCRIBED HEREIN IS SUBJECT TO ALL THE TERMS, EXCLUSIONS AND CONDITIONS OF SUCH POLICIES. AGGREGATE LIMITS SHOWN MAY HAVE BEEN REDUCED BY PAID CLAIMS.

INSR ADD'L LTR	INSRD	TYPE OF INSURANCE	POLICY NUMBER	POLICY EFFECTIVE DATE (MM/DD/YY)	POLICY EXPIRATION DATE (MM/DD/YY)	LIMITS
A		GENERAL LIABILITY <input checked="" type="checkbox"/> COMMERCIAL GENERAL LIABILITY CLAIMS MADE <input checked="" type="checkbox"/> OCCUR PROFESSIONAL LIAB EXCL GEN'L AGGREGATE LIMIT APPLIES PER: <input type="checkbox"/> POLICY <input checked="" type="checkbox"/> PROJECT <input type="checkbox"/> LOC	84SBUBV6871	11/01/09	11/01/10	EACH OCCURRENCE \$ 1000000 DAMAGE TO RENTED PREMISES (Ea occurrence) \$ 300000 MED EXP (Any one person) \$ 10000 PERSONAL & ADV INJURY \$ 1000000 GENERAL AGGREGATE \$ 2000000 PRODUCTS - COMP/OP AGG \$ 2000000
A		AUTOMOBILE LIABILITY <input type="checkbox"/> ANY AUTO <input type="checkbox"/> ALL OWNED AUTOS <input type="checkbox"/> SCHEDULED AUTOS <input checked="" type="checkbox"/> HIRED AUTOS <input checked="" type="checkbox"/> NON-OWNED AUTOS	84SBUBV6871	11/01/09	11/01/10	COMBINED SINGLE LIMIT (Ea accident) \$ 1000000 BODILY INJURY (Per person) \$ BODILY INJURY (Per accident) \$ PROPERTY DAMAGE (Per accident) \$
		GARAGE LIABILITY <input type="checkbox"/> ANY AUTO				AUTO ONLY - EA ACCIDENT \$ OTHER THAN EA ACC \$ AUTO ONLY AGG \$
		EXCESS/UMBRELLA LIABILITY <input type="checkbox"/> OCCUR <input type="checkbox"/> CLAIMS MADE DEDUCTIBLE RETENTION \$				EACH OCCURRENCE \$ AGGREGATE \$ \$ \$ \$
		WORKERS COMPENSATION AND EMPLOYERS' LIABILITY ANY PROPRIETOR/PARTNER/EXECUTIVE OFFICER/MEMBER EXCLUDED? If yes, describe under SPECIAL PROVISIONS below				WC STATUTORY LIMITS OTHER E.L. EACH ACCIDENT \$ E.L. DISEASE - EA EMPLOYEE \$ E.L. DISEASE - POLICY LIMIT \$
		OTHER				

DESCRIPTION OF OPERATIONS / LOCATIONS / VEHICLES / EXCLUSIONS ADDED BY ENDORSEMENT / SPECIAL PROVISIONS

## CERTIFICATE HOLDER

## CANCELLATION

SHOULD ANY OF THE ABOVE DESCRIBED POLICIES BE CANCELLED BEFORE THE EXPIRATION DATE THEREOF, THE ISSUING INSURER WILL ENDEAVOR TO MAIL 30 DAYS WRITTEN NOTICE TO THE CERTIFICATE HOLDER NAMED TO THE LEFT, BUT FAILURE TO DO SO SHALL IMPOSE NO OBLIGATION OR LIABILITY OF ANY KIND UPON THE INSURER, ITS AGENTS OR REPRESENTATIVES.

AUTHORIZED REPRESENTATIVE

*Sandra R. Boillet*



## Water Treatment Plant Projects



**Village of Golf RO Plant**



**Village of Royal Palm Beach RO Plant**



## Water Treatment Plant Projects



**City of Rivera Beach Water Treatment Plant**



**City of Rivera Beach Water Treatment Plant**

## Water Treatment Plant Projects



**City of Lake Worth Well**



**City of Lake Worth Well**



## Water Control Projects



**Wellington Pump Station No. 6**



**NPBCID Water Control Structure**



## Water Control Projects



**SFWMD Pump Station 319**



**SFWMD Pump Station 319 Switchgear**

## Wastewater Treatment Plant Projects



**Riviera Beach Master Lift Station**



**West Palm Beach Master Lift Station**



## Wastewater Treatment Plant Projects



**South Martin Regional Utilities WWTP**



**South Martin Regional Utilities WWTP**



## Wastewater Treatment Plant Projects



**IBIS Lift Station Control Panel**



**IBIS Lift Station**

## Wastewater Treatment Plant Projects



**ECRWWTP Truck Loading**



**ECRWWTP Truck Loading Control Panels**



## Solid Waste Projects



**Broward County SWA Leachate Pump Station**



**Palm Beach County SWA Compost Facility**



## Solid Waste Projects



**Miami-Dade Landfill**



**Palm Beach County SWA Biofilter Well**

## Solid Waste Projects



**St. Lucie County Landfill Pump Station**



**St. Lucie County Baling Facility**



## Solid Waste Projects



**St. Lucie County C & D Facility**



**St. Lucie County C & D Facility Switchgear**



## Lighting Projects



**FDOT State Road 60**



**Vista Parkway**

## Lighting Projects



**FDOT Martin County A1A**



**PBCC Parking Lot**

## Airport Projects



**Pompano Beach Airport**



**Airport Taxiway Lighting**



## Airport Projects



**Airport Taxiway Sign**

## Power Generation Projects



**City of Lake Worth Power Plant Generator**



**City of Lake Worth Distribution Switchgear**



## Power Generation Projects



**City of Lake Worth Power Generation Control Room**



**City of Lake Worth Power Substation**



## Power Generation Projects



**T-Rex Center Power Plant**



**T-Rex Center Power Plant Generators**